

FLUKE®

1750

Power Recorder

Operators Manual

LIMITED WARRANTY AND LIMITATION OF LIABILITY

Each Fluke product is warranted to be free from defects in material and workmanship under normal use and service. The warranty period is one year and begins on the date of shipment. Parts, product repairs, and services are warranted for 90 days. This warranty extends only to the original buyer or end-user customer of a Fluke authorized reseller, and does not apply to fuses, disposable batteries, or to any product which, in Fluke's opinion, has been misused, altered, neglected, contaminated, or damaged by accident or abnormal conditions of operation or handling. Fluke warrants that software will operate substantially in accordance with its functional specifications for 90 days and that it has been properly recorded on non-defective media. Fluke does not warrant that software will be error free or operate without interruption.

Fluke authorized resellers shall extend this warranty on new and unused products to end-user customers only but have no authority to extend a greater or different warranty on behalf of Fluke. Warranty support is available only if product is purchased through a Fluke authorized sales outlet or Buyer has paid the applicable international price. Fluke reserves the right to invoice Buyer for importation costs of repair/replacement parts when product purchased in one country is submitted for repair in another country.

Fluke's warranty obligation is limited, at Fluke's option, to refund of the purchase price, free of charge repair, or replacement of a defective product which is returned to a Fluke authorized service center within the warranty period.

To obtain warranty service, contact your nearest Fluke authorized service center to obtain return authorization information, then send the product to that service center, with a description of the difficulty, postage and insurance prepaid (FOB Destination). Fluke assumes no risk for damage in transit. Following warranty repair, the product will be returned to Buyer, transportation prepaid (FOB Destination). If Fluke determines that failure was caused by neglect, misuse, contamination, alteration, accident, or abnormal condition of operation or handling, including overvoltage failures caused by use outside the product's specified rating, or normal wear and tear of mechanical components, Fluke will provide an estimate of repair costs and obtain authorization before commencing the work. Following repair, the product will be returned to the Buyer transportation prepaid and the Buyer will be billed for the repair and return transportation charges (FOB Shipping Point).

THIS WARRANTY IS BUYER'S SOLE AND EXCLUSIVE REMEDY AND IS IN LIEU OF ALL OTHER WARRANTIES, EXPRESS OR IMPLIED, INCLUDING BUT NOT LIMITED TO ANY IMPLIED WARRANTY OF MERCHANTABILITY OR FITNESS FOR A PARTICULAR PURPOSE. FLUKE SHALL NOT BE LIABLE FOR ANY SPECIAL, INDIRECT, INCIDENTAL, OR CONSEQUENTIAL DAMAGES OR LOSSES, INCLUDING LOSS OF DATA, ARISING FROM ANY CAUSE OR THEORY.

Since some countries or states do not allow limitation of the term of an implied warranty, or exclusion or limitation of incidental or consequential damages, the limitations and exclusions of this warranty may not apply to every buyer. If any provision of this Warranty is held invalid or unenforceable by a court or other decision-maker of competent jurisdiction, such holding will not affect the validity or enforceability of any other provision.

Fluke Corporation
P.O. Box 9090
Everett, WA 98206-9090
U.S.A.

Fluke Europe B.V.
P.O. Box 1186
5602 BD Eindhoven
The Netherlands

11/99

To register your product online, visit register.fluke.com

Table of Contents

Title	Page
Introduction.....	1
Contacting Fluke.....	2
Safety Information.....	3
Accessories.....	4
Features.....	6
Applying the Front Panel Decal.....	8
Charging the PDA Battery.....	10
Installing the Software.....	10
Installing Power View on the PDA.....	10
PC System Requirement for Power Analyze.....	10
Installing Power Analyze.....	11
Installing the Power Recorder at a Facility.....	11
Work Flow.....	11
Installing the Recorder.....	12
Connecting the Recorder to the Wiring.....	12
Verifying Your Connection.....	13
Finishing UP.....	14
Managing Recorded Data.....	14
Power Type Diagrams.....	14
Communicating with the Recorder Using Power View.....	25
Navigating in Power View on the PDA.....	26
Power View Menus.....	26
Icons on the Menu Bar.....	26
Menu Tree.....	28
Home Screen.....	29
Downloading Data and Erasing Memory.....	31
Viewing Live Data.....	35
Scope Screen.....	35
Meter Screen.....	36
Phasor Screen.....	36
Trend Screen.....	37
Harmonics Screen.....	37
Viewing Phases.....	38
Setting Up the Recorder.....	38

Setting the Clock	39
Probe Detect	40
Setting the IP Address	40
Overwriting Nominal Power Values	41
Assign Recorder Name and Password	41
Using Phase Swap	42
Setting the Volts and Current Ratio	43
Setting the Snapshot Period - Periodic Waveform Capture Setting	44
Working with Annotations	45
Using Image or Voice Annotations	46
Inserting Image or Voice Annotations	47
Cleaning and Maintenance	47
Regulatory Information for Wireless Communication	47
Specifications for the System: Recorder and Power Analyze Software	48
General Specifications	48
Input Specifications	48
Synchronization and Sampling	48
Voltage and Current Measurements	49
Voltage and Current Measurement Accuracy	49
Transient Voltage (Impulse)	49
Dip (Sag) and Swell Measurements	49
Power and PF Measurement	50
External Interface Specifications	50
Environmental and Safety Specifications	50

List of Tables

Table	Title	Page
1.	Symbols.....	4
2.	Standard Accessories	4
3.	Input Terminals and Controls.....	7

List of Figures

Figure	Title	Page
1.	Fluke 1750 Power Recorder	6
2.	Applying the Fron Panel Decal	8
3.	Connecting the Supplemental Ground Terminal	9
4.	One Phase Plus Neutral	15
5.	One-Phase IT No Neutral	16
6.	One-Phase Split Phase.....	17
7.	Three-Phase Wye	18
8.	Three-Phase Delta	19
9.	Three-Phase IT	20
10.	Three-Phase High Leg.....	21
11.	Three-Phase Open Leg	22
12.	2-Element Delta	23
13.	2 ½-Element Wye.....	24
14.	Connecting to the Recorder.....	25
15.	Power View Menu Tree	28

1750 Power Recorder

Introduction

The Fluke 1750 Power Recorder is a comprehensive yet easy to use system for power quality investigations. The 1750 Power Recorder, referred to hereafter as simply “the Recorder”, consists of a power recorder instrument, a wireless handheld Personal Digital Assistant (PDA) for control and setup, and a powerful yet easy to use PC application, Power Analyze. Four 400 A current probes are provided as standard equipment. A wide range of flexible and clamp-on current probes are available from Fluke.

Key features of the 1750 Power Recorder are:

- **No PC needed for setup**
Using the included a wireless-enabled Personal Digital Assistant (PDA) as a controller, you do not need a PC to configure the Recorder, troubleshoot connections, preview data, or download the recorded data. Downloaded data goes onto the SD memory card plugged into the 1750, not directly to the PDA. The range of the PDA with the wireless link is about 15 meters (45 feet) from the Recorder.
- **Simplified test lead connections to the power network**
Simply connect a voltage probe to a conductor on each phase that you want to record. On the current inputs, the Recorder automatically identifies what type of probe is connected. The Recorder then configures its measurement system appropriately for the model of current probe you are using.
- **Connection diagrams for the supported power network configurations (delta, Wye, and others) appear on the handheld PDA controller.** Once you make connections, you can view live readings and a phasor diagram on the PDA to confirm the connections. If a phase channel is wired incorrectly, you can swap the phase to another channel by changing an internal Recorder setting using the PDA, and then reconfirm correct readings.
- **Internal Uninterruptible Power Supply (UPS)**
An internal NiMH (Nickel-Metal-Hydride) battery pack and charging system maintain data capture continuity through power interruptions of 5 minutes or less.
- **Automatic disturbance capture**
The Recorder uses an automatic, self-learning threshold routine, which means you do not have to set any event threshold limits before you start recording. You detect and display power quality events (disturbances) using the Power Analyze software on a PC after the event has been captured.

You define thresholds for events after data is stored on the PC. This is called the "event detector" in the software. It does not make permanent changes to the data file, so you can experiment with different thresholds after the fact without worrying about losing data.

With these features, there is little else required to set up and start recording the data to conduct a power quality survey. Should you want to extensively analyze collected data, the procedures described later in this manual review the transfer of data from the Recorder to the PDA, and finally to a PC. Data may then be analyzed using Power Analyze on a PC. Extensive online help is provided in the Power Analyze software on the product CD shipped with the Recorder.

Contacting Fluke

To contact Fluke, call:

1-888-993-5853 in USA

1-800-363-5853 in Canada

+31-402-675-200 in Europe

+81-3-3434-0181 in Japan

+65-738-5655 in Singapore

+1-425-446-5500 from anywhere in the world

Or, visit Fluke's Web site at www.fluke.com

To register your product, visit register.fluke.com

To contact Technical Support:

fpqsupport@fluke.com or 888-257-9897

Safety Information







The Recorder complies with EN 61010-1 600 V CAT IV, 1000 V CAT III overvoltage rating. See the Specifications section for a full agency compliance list.

⚠⚠ Warning

To avoid electrical shock or fire:

- **Review the entire manual before using the Recorder and its accessories and observe all warnings and cautions.**
- **Avoid working alone.**
- **Do not operate the Recorder around explosive gas or vapor.**
- **Use only insulated current probes, test leads, and adapters as supplied with the Recorder, or indicated as suitable for the Recorder.**
- **Before use, inspect the Recorder, voltage probes, current probes, leads, and accessories for mechanical damage, and replace when damaged. Look for cracks or missing plastic. Pay special attention to the insulation surrounding the connectors.**
- **Remove all probes, test leads, and accessories that are not in use.**
- **Make sure the Recorder is properly connected through the power cord to protective earth ground.**
- **Do not apply input voltages above the rating of the Recorder as shown on the input panel.**
- **Do not apply voltages in excess of the marked ratings of the voltage probes and current probes.**
- **Do not use exposed metal BNC or banana plug connectors.**
- **Do not insert metal objects into connectors.**
- **Never open the Recorder's enclosure, dangerous voltages are present. There are no user replaceable parts in the Recorder. Refer servicing of internal parts to qualified service personnel**
- **Use the Recorder only as specified in this manual, or the protection provided by the Recorder may be impaired.**

Table 1. Symbols

	Hazardous voltage. Risk of electrical shock. Precedes Warning		Risk of danger. Important information. See manual. Precedes Caution and Warning.
	Conforms to requirements of European Union and European Free Trade Association (EFTA).		Do not dispose of this product as unsorted municipal waste. Contact Fluke or a qualified recycler for disposal.
	<i>Canadian Standards Association.</i> [Note: Canadian and US.]		Protective conductor terminal.
CAT III	CAT III equipment is designed to protect against transients in equipment in fixed-equipment installations, such as distribution panels, feeders and short branch circuits, and lighting systems in large buildings.	CAT IV	CAT IV equipment is designed to protect against transients from the primary supply level, such as an electricity meter or an overhead or underground utility service.

Accessories

Table 2 describes the standard accessories that ship with the Recorder.

Table 2. Standard Accessories

Description	Part Number
Ethernet cable, 3 meters, yellow	2402854
Colored plastic clips for test leads (32 clips, 8 colors, 4 clips each color)	2157607
Model TLS430, test lead set including cable and clips	2157713
512MB Secure Digital (SD) Memory Card for downloading data	2386744
Model 3140R, 400 A Clamps (3)	2277216
AC power cord, 3 meters	2441360
Personal Digital Assistant (PDA) with docking station	2386780
CD ROM Manuals and Software	2386771
1750 Getting Started Guide	2386767
Sheet of Front Panel Decals	2436261
Sets of international ac power plug adapters for the PDA charger	2583479
International adapters for the Recorder power cord	2441372

You can also order the following optional accessories. For more information about accessories, see *Contacting Fluke* earlier in this manual. An updated list is always available on www.fluke.com.

- Soft Carry Bag
- Hard Transit Case
- Security Cable
- Mounting Bracket
- Replacement Ethernet Cable Kit
- Various Current Probes
 - 3601 Crocodile Clip
 - 3602 Battery Clip
 - 3605 Stud Type
 - 3606 Screw Type
 - 3607 Bus Bar
 - 3608 Plunger Type
 - 3641 In-Line Fuse
- Replacement Voltage Lead Set
- Clamp-on Current Transformers (3005R, 3014, 3120R, 3100R, 3300)
- Flexible Current Transformers (3110, 3112, 3210, 3212, 3310, 3312)
- Split-Core Current Transformers (3583R, 3584R, 3585R)
- Interface and Extension Cables
 - 3570 CT Cable
 - 3533 Pod Adapter

Features

The Recorder front panel is illustrated in Figure 1 and described in Table 3.

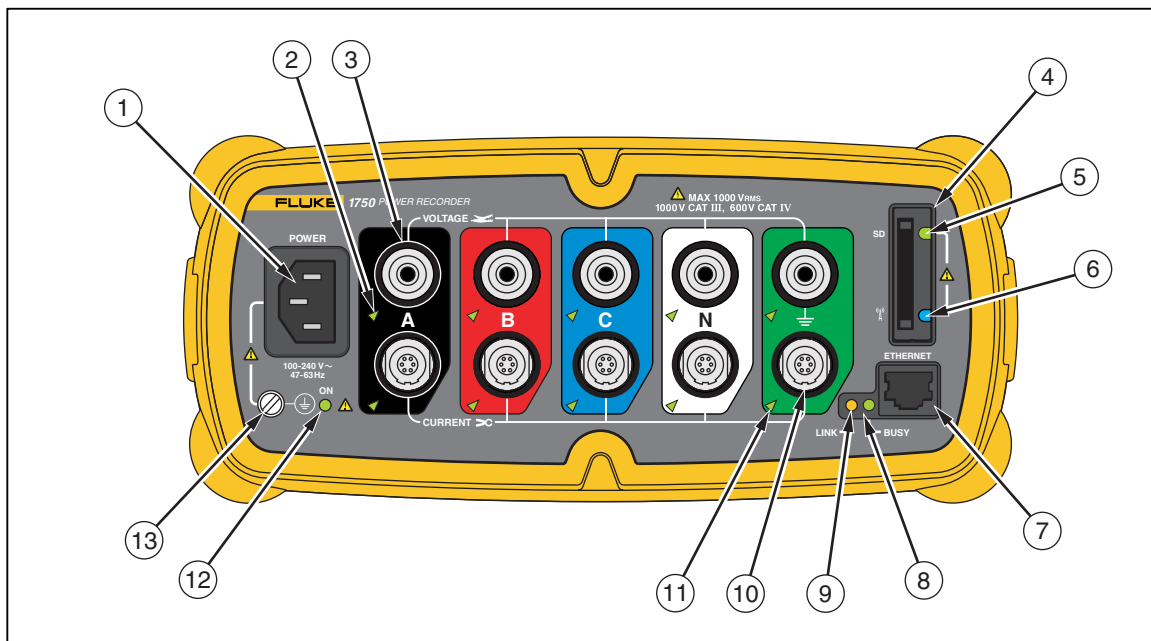


Figure 1. Fluke 1750 Power Recorder

azd09f.eps

⚠ Caution

Connecting the supplemental ground terminal and the line cord safety ground to different ground potentials creates a ground loop that can damage the Recorder.

Table 3. Input Terminals and Controls

Number	Description
①	Standard 120/240 V 50/60 Hz power input for Recorder power
②	Voltage indicator Steady Voltage is present, not overloaded Blinking Voltage overload (overload threshold 1100 V)
③	Five voltage measurement inputs
④	Removable Secure Digital (SD) memory card for transfer of large quantities of data. You can remove the card from the Recorder, insert in the PDA and transfer data to the PC via the “synchronize data” feature of the PDA.
⑤	SD status indicator Steady green SD card inserted Blinking Busy - do not remove the card
⑥	Wireless Controller Status Indicator Steady Blue Wireless controller enabled but not communicating Blinking Wireless controller communicating Off Disabled
⑦	Ethernet port. TCP/IP via Ethernet is used to connect the Recorder to a PC for downloading recorded data, and for configuring the Recorder when not using the PDA.
⑧	Busy Indicator Blinking Network is busy
⑨	Link indicator Off No link Steady Link Present Blinking Communicating (with PDA or PC)
⑩	Current Measurement Terminals (5)
⑪	Current indicator Steady Current probe in normal range Blinking > 110% of probe range, use a higher range probe Off Current insufficient to measure
⑫	Red/Green LED Steady green AC input power normal Green/Red blinking Recording Blinking red Recorder running on UPS
⑬	Ground Terminal Connecting the supplemental ground terminal and the line cord safety ground to different ground potentials creates a ground loop that can damage the Recorder. To avoid this, use the supplemental ground terminal only when no protective earth ground connection exists through the line power cord. If there is any chance that a safety ground connection does exist through the line power cord connection, make sure to connect the supplemental ground terminal only to the ground system used by the ac receptacle that powers the Recorder. See Figure 3.

Applying the Front Panel Decal

Self-adhesive front panel decals are supplied with the 1750. The supplied decals correspond to the wiring color codes used in the USA, Europe and UK (new), Europe (old), UK, Canada, and China. Apply the decal appropriate for your local wiring codes around the current and voltage inputs as shown in Figure 2.

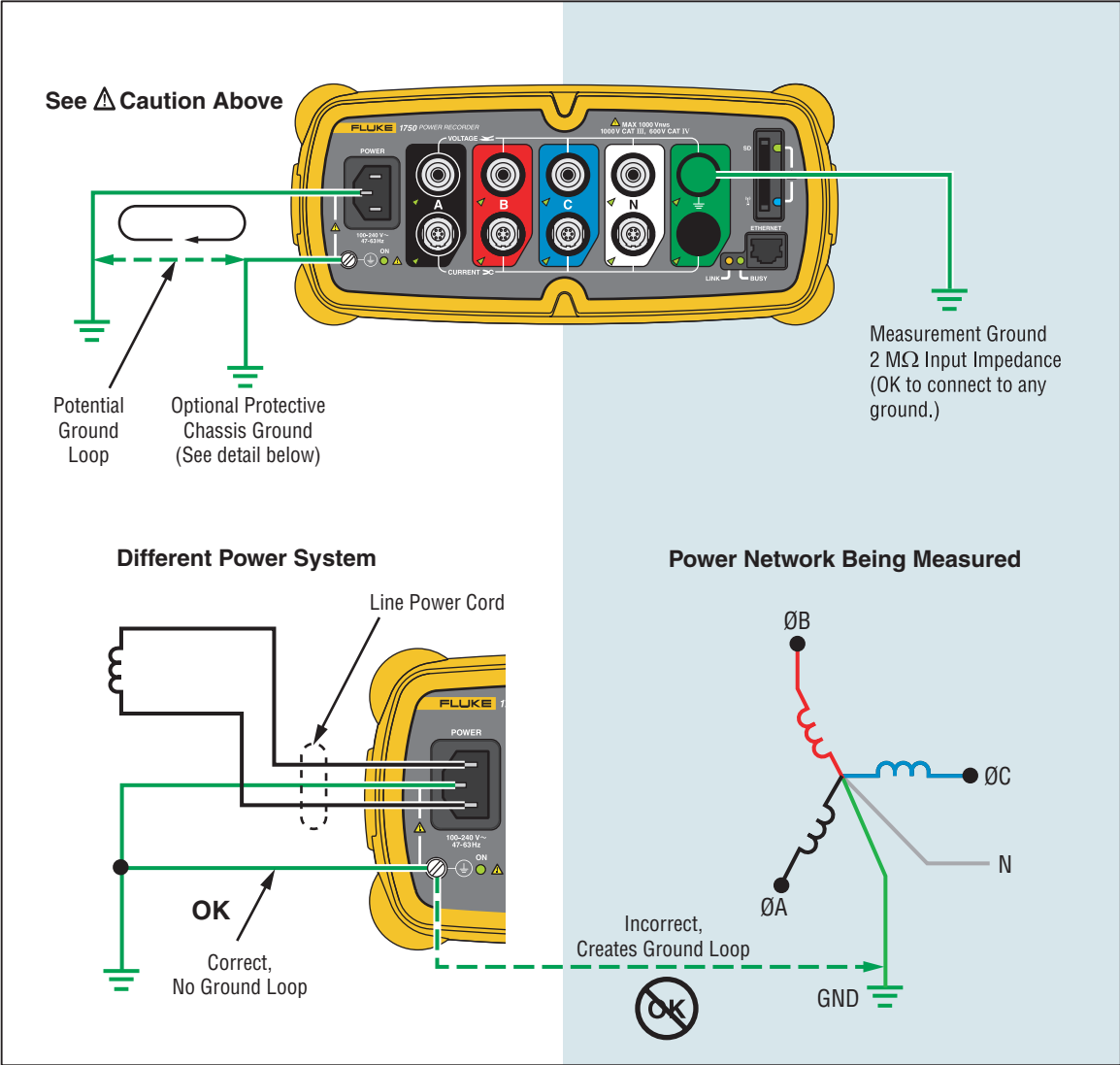


azd17f.eps

Figure 2. Applying the Front Panel Decal

⚠ Caution

Connecting the supplemental ground terminal and the line cord safety ground to different ground potentials creates a ground loop that can damage the Recorder.



azd11f.eps

Figure 3. Connecting the Supplemental Ground Terminal

Charging the PDA Battery

Your PDA is shipped with a discharged or partially charged, rechargeable battery. You should fully charge the battery before setting up the device, and recharge it regularly. Refer to your PDA user's guide for detailed information about the battery.


⚠Caution

Do not leave important data on the PDA. If the battery discharges completely, you will lose all data not stored in File Store (ROM). Discharging the battery completely is similar to performing a hard reset. Refer to the PDA user's manual for more information.

Installing the Software

This section describes how to install Fluke Power View software on the PDA and Fluke Power Analyze software on your PC. Keep your product CD in case you need to reinstall the software in the future. You should periodically check the Fluke website: www.fluke.com to see if any 1750 firmware or application software updates are available for download.

Installing Power View on the PDA

1. Insert the CD that ships with your PDA in your PC. Follow the on-screen instructions to install the ActiveSync software that allows your PC to communicate with the PDA.
2. Put the PDA in the docking station and establish a partnership between the PDA and your PC. This can be a "Guest" or "Standard" partnership.
3. Insert the CD that ships with your Recorder in the CD-ROM drive on your PC.
4. A window appears that lists options on the CD. If the install software window does not automatically appear, do the following:
5. On the Windows taskbar, select Start, then Run.
6. Type d:\loader.exe (where d: is your CD drive letter).
7. Select Install Software.
8. Select Install Fluke Power View.
9. Power View will be installed in the Programs folder on the PDA.
10. To start Power View select Start, and then Programs on the PDA. Tap the Power View icon  to start using the application.

PC System Requirement for Power Analyze



- Windows 2000 Professional at minimum, Windows XP or higher recommended. Administrator privileges are required to install software on Windows 2000 or XP.
- PC with 300 MHz or higher processor clock speed, Intel Pentium/Celeron family, or AMD Athlon/Duron family, or better.
- Processor Recommended: 1 GHz or higher, Pentium 4, AMD Athlon, or better.
- 256MB RAM (1GB recommended).
- 1024 x 768 or higher resolution video.
- Keyboard and mouse.

Installing Power Analyze

Before installing the software on your PC, make sure you have Internet Explorer version 5.01, or later appropriate to the language or culture settings of the operating system installed on your computer.

⚠ Caution

Do not remove the CD until after you have successfully installed the software, rebooted the machine, and opened the application.

1. Insert the CD into your CD-ROM drive.
2. A window appears that lists options on the CD. If the window does not automatically appear
3. On the Windows taskbar, select Start, then Run.
4. Type d:\loader.exe (where d: is your CD drive letter).
5. Select Install Software.
6. Select Install Fluke Power Analyze.
7. Follow the installation instructions that appear. After software installation is complete, the Power Analyze icon  appears on your desktop.
8. Start Power Analyze on your PC by choosing Start > All Programs > Fluke > Power Analyze > Launch Power Analyze or double-click the Power Analyze icon  on your desktop.
9. After the installation is complete, please take a few minutes to complete your product registration. You can register quickly online (preferred) at <http://register.fluke.com> or you can print the form and fax it to the number provided on the form. Product registration is very important since it allows you to get free software updates and helps us provide you with the fastest and most efficient technical support.

Note

When Windows XP Service Pack 2 is installed on your PC, Power Analyze can no longer browse for 1750 Power Recorders. This occurs because Service Pack 2 installs a firewall that does not permit Power Analyze to receive browse data. You may need to change your Windows firewall settings to allow the program FPA.exe to use ports 18571 (TCP) and 18572 (UDP). For more on changing firewall settings, refer to <http://support.microsoft.com>.

Installing the Power Recorder at a Facility

This section describes the steps you need to take to set up the Recorder at a facility and begin a recording session.

Work Flow

There are three distinct stages for a recording session.

- **Set-up**
Set-up, hookup, and verification of connections and measured signals. This is when you will want to clear the Recorder memory (not required, but good practice because data download when finished only contains your new data), make any desired Recorder setting changes, and insert annotations and/or an

optional START mark into the recorded data stream. Annotations are messages or notes you insert into the data stream during a recording session.


- **Interim checkup, mid-recording session**
At this time, you may want to re-check all the live input signals, and download the data recorded since the beginning of the recording session. This does not interfere with ongoing recording in any way. Annotation capability is always available during the recording session.
- **End of recording session**
You can re-verify if desired, correctness of live data and then download data, power off the Recorder, and pack up for transport.

Installing the Recorder

To install the Recorder at a facility, follow the basic steps below.

1. Position the Recorder within 2 m (6 ft) of the monitoring location.
2. The Recorder can be set on the floor or a table, or attached and secured to a pole or other mounting surface. The Recorder can be oriented vertically or horizontally.
3. Connect the Recorder to a 100 to 240 V ac power source, 50 or 60 Hz.
 - Connect the power cord to the Recorder using the appropriate supplied adapter.
 - Connect the power cord to a properly grounded wall outlet.

⚠ Caution

- **Ground the chassis before you do anything else.**
 - **Be sure to plug the power cord into the Recorder panel BEFORE connecting it to an outlet**
4. Plug the power cord into a properly grounded wall outlet.
 5. Turn on the PDA and tap the Power View icon  to launch Power View.
 6. If a Recorder is within range and is not password protected, the Home screen for live data appears.
 7. If more than one Recorder is within range, select one Recorder for use.
 8. If you have previously established password protection for the Recorder using the Power Analyze PC software, you must type the correct password in the Password text box and tap the Enter button. (Password protection is established for a specific Recorder using either the Setup Password menu in Power View or the Power Analyze software).
 9. All LEDs should flash ON, then OFF, and then each should turn ON and OFF in sequence. The LEDs will then remain on if you make secure test lead connections and there is sufficient voltage and current.

Connecting the Recorder to the Wiring

After you have set up the Recorder you are ready to connect the voltage leads and current probes or flexi-probes to the power network to be tested. Refer to the Power Type diagrams provided on the PDA or in the *1750 Operators Manual*.

In most cases, you should install the current probes first. Because they are clamped around wires, current probes are usually more secure than voltage probes. Examine the

conductors you are about to connect to and determine if you should attach the current probes to the phase wires or busbars before you connect the voltage probes.

1. Select and attach the appropriate current probes to the Recorder.
2. Select and attach the appropriate voltage test leads and probes to the Recorder.

Note

If your power connections require potential transformers (PTs) or current transformers (CTs), you can use the ratio settings in Power View to set the Recorder to display readings as they exist on the primary side of the PT and CT (for example, 12000 V).

3. Connect the Recorder to the wiring by first connecting the measurement ground test lead to the distribution system ground, and then the neutral probe to neutral.
4. Connect the ground current probe to the distribution system ground and the neutral current probe to neutral, with the arrow on the current probe pointing towards the load (away from the source) in each case.
5. Connect the remaining current probes to the power network.
 - The arrow on the current probe should point toward the load.
 - Use the color-coding on the leads to help you connect the probes to the correct phases, neutral and ground.
6. Connect the remaining voltage probes.

Note

Make sure the voltage probes and current probes are paired correctly , Phase A (L1) voltage to Phase A (L1) current and so forth. Calculations are made in pairs and cannot be changed after data is recorded. The leads for the voltage probe and current probe of the same color should be attached to the same phase wire or busbar.

7. Check the LED for each phase to make sure a connection is established.
 - When a phase LED is ON or lighted, you know that the connection is active and that voltage and current is within the normal range.
 - When a phase LED is BLINKING, you are connected but the voltage or current is exceeding the normal range or exceeding the range of the probe that you are using.
 - When a current LED is OFF or unlit, there is insufficient current present in the line.

Verifying Your Connection

Before you leave the Recorder to accumulate data at the facility, double-check the connections.

- Make sure the current probes are secured and completely closed around the conductors and that the voltage and current LEDs are steady-on.
- Use the PHASOR screen on the PDA to verify that the voltage and current connections are correct. You can swap the connections using Power View if they are incorrect.

Finishing UP

After making any corrections to the connections, recheck the phasor diagrams to confirm your connection. Make sure the nominal voltage, nominal line frequency, and power type (delta, wye, other) are correct before you leave the Recorder. It is a good practice to insert a START Mark when you are finished with all settings so you can download data and ignore useless readings and events common at the beginning probe connecting activities.

Managing Recorded Data

Recorded data resides in the Recorder on an internal non-physically accessible flash memory circuit. It is not transferred to an SD memory card in the Recorder's SD memory slot until you request a download action using the PDA or an attached PC.

It is never technically necessary to erase internal memory. When the Recorder has new data to record, it does so automatically, overwriting the oldest data. You can erase internal memory for security reasons, or if you want to simplify what you will be seeing in the download data screen. The start and end times will represent one recording session when old data is erased.

Note

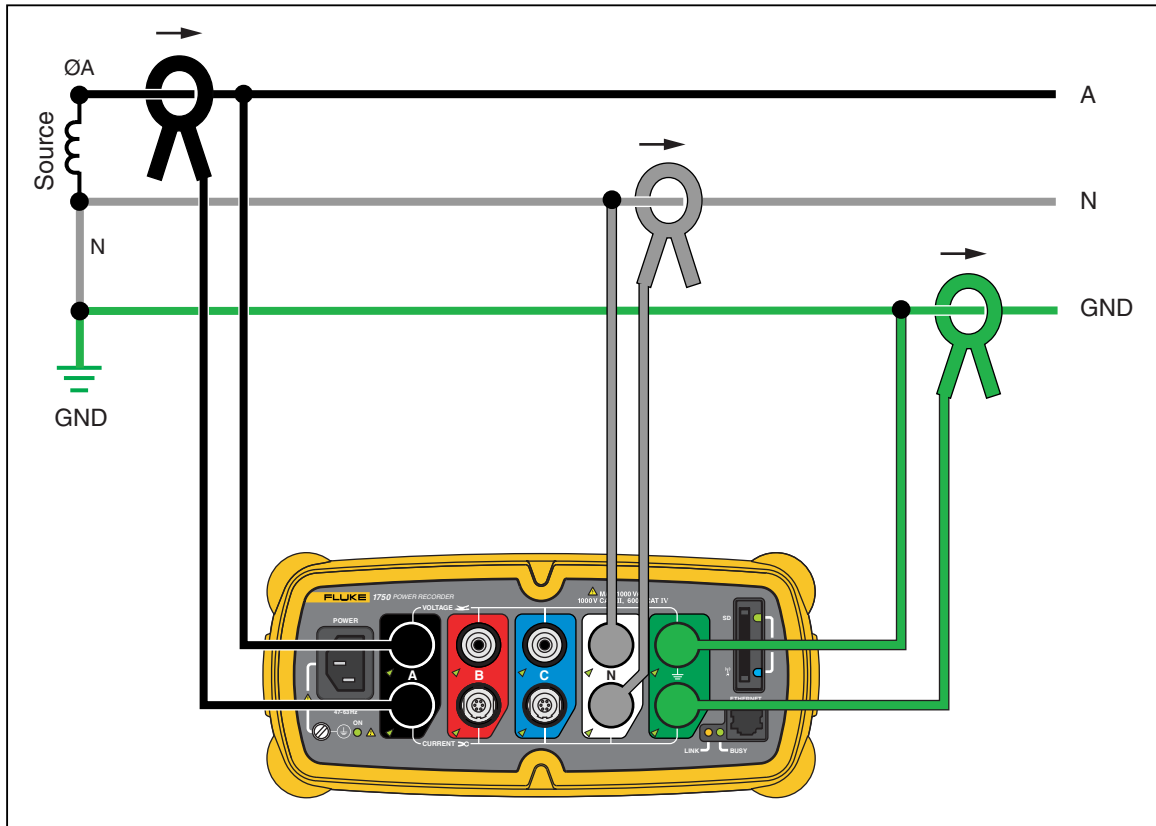
Data is not removed from internal Recorder memory until you erase it using Power View software on the PDA or Power Analyze software on your PC.

Power Type Diagrams

The wiring illustrations included cover the standard power configurations that are selectable in Power View or Power Analyze software. The diagrams are provided as an aid in making the correct test lead connections. Power type diagrams are also included on your PDA and can be referenced when you are setting up nominal power on the Recorder.

Available power type settings are:

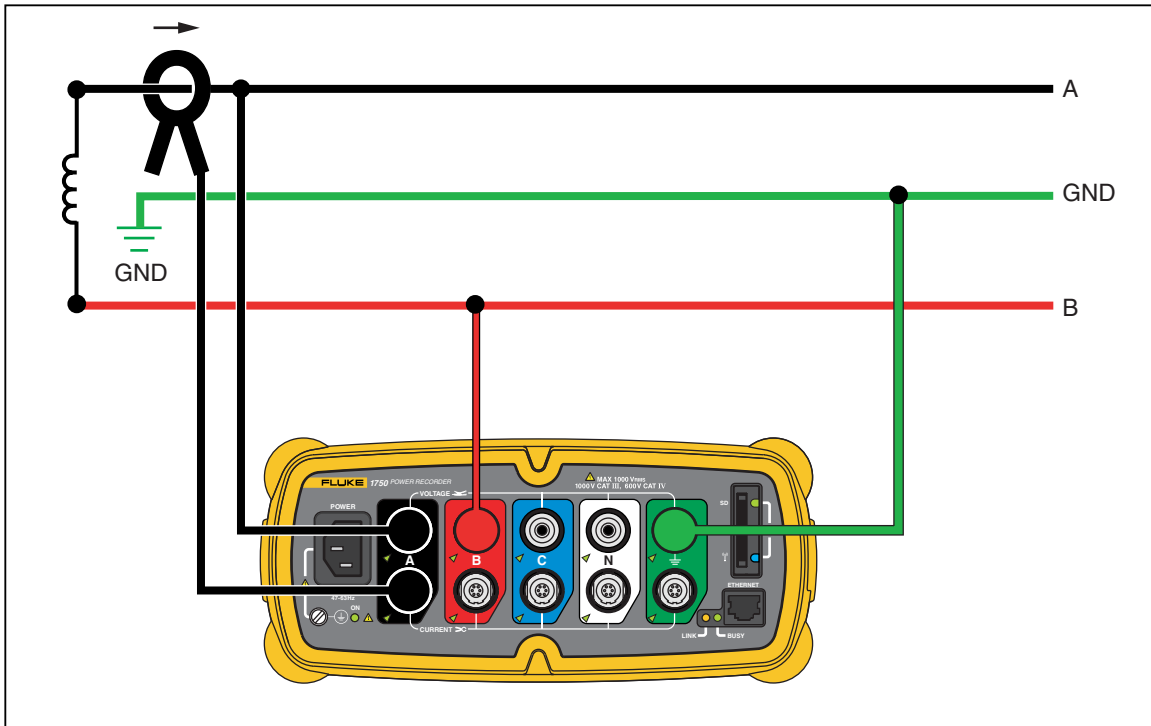
- One-Phase Plus Neutral (Figure 4)
- One-Phase IT No Neutral (Figure 5)
- One-Phase-Split Phase (Figure 6)
- Three-Phase Wye (Figure 7)
- Three-Phase Delta (Figure 8)
- Three-Phase IT (Figure 9)
- Three-Phase High Leg (Figure 10)
- Three-Phase Open Leg (Figure 11)
- 2-Element Delta (Figure 12)
- 2 ½-Element Wye (Figure 13)



azd02f.eps

Figure 4. One Phase Plus Neutral

Example: Branch circuit at an outlet.



azd14f.eps

Figure 5. One-Phase IT No Neutral

Example: Used in Norway and in some hospitals. This would be the connection at a branch circuit.

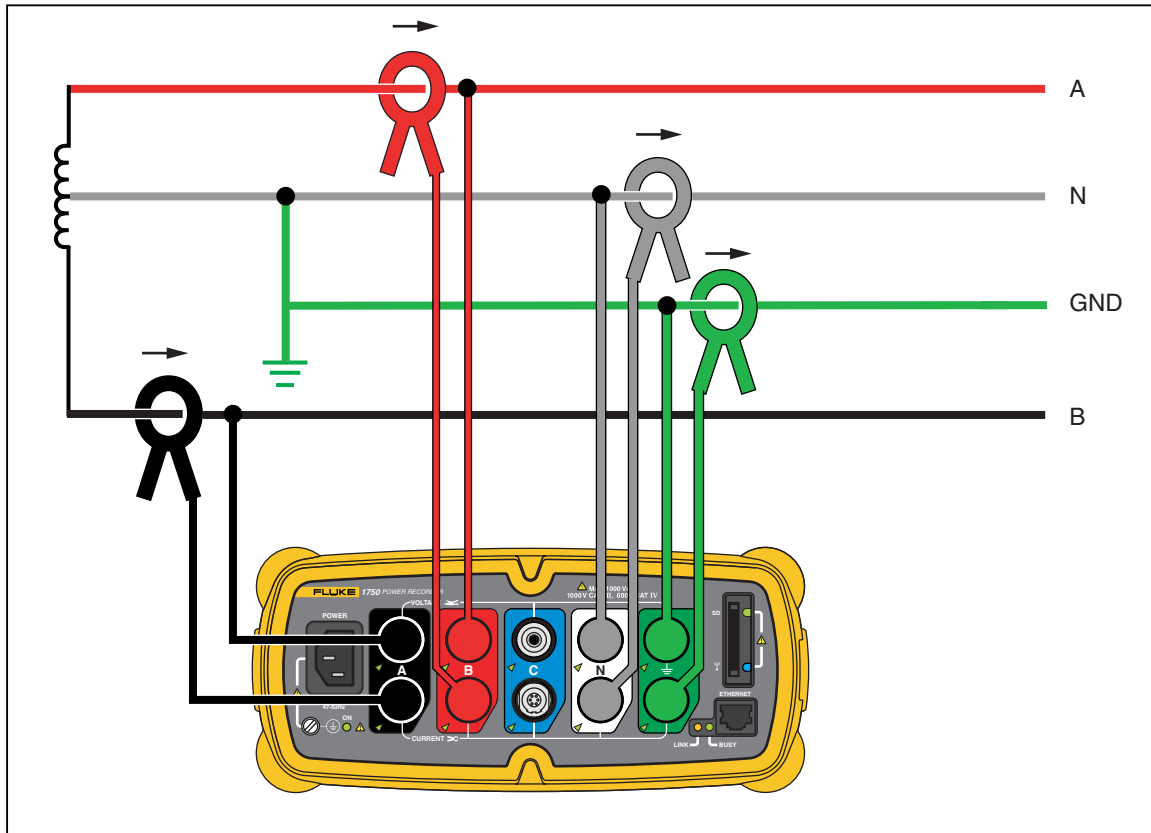
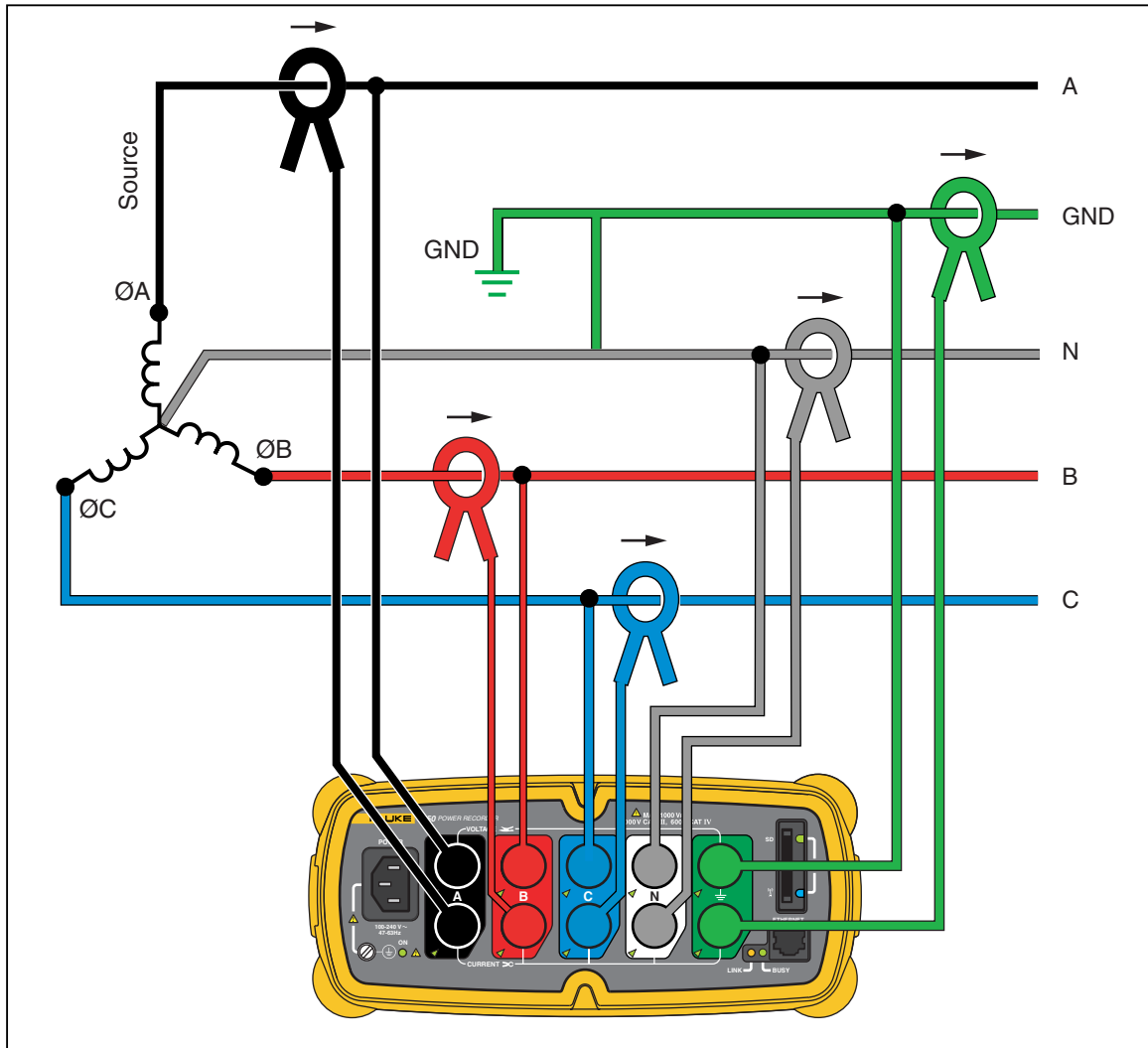


Figure 6. One-Phase Split Phase

azd03f.eps

Example: A North American residential installation at the service entrance.



azd04f.eps

Figure 7. Three-Phase Wye

Example: Also called “Star” or four-wire connection. Typical commercial building power.

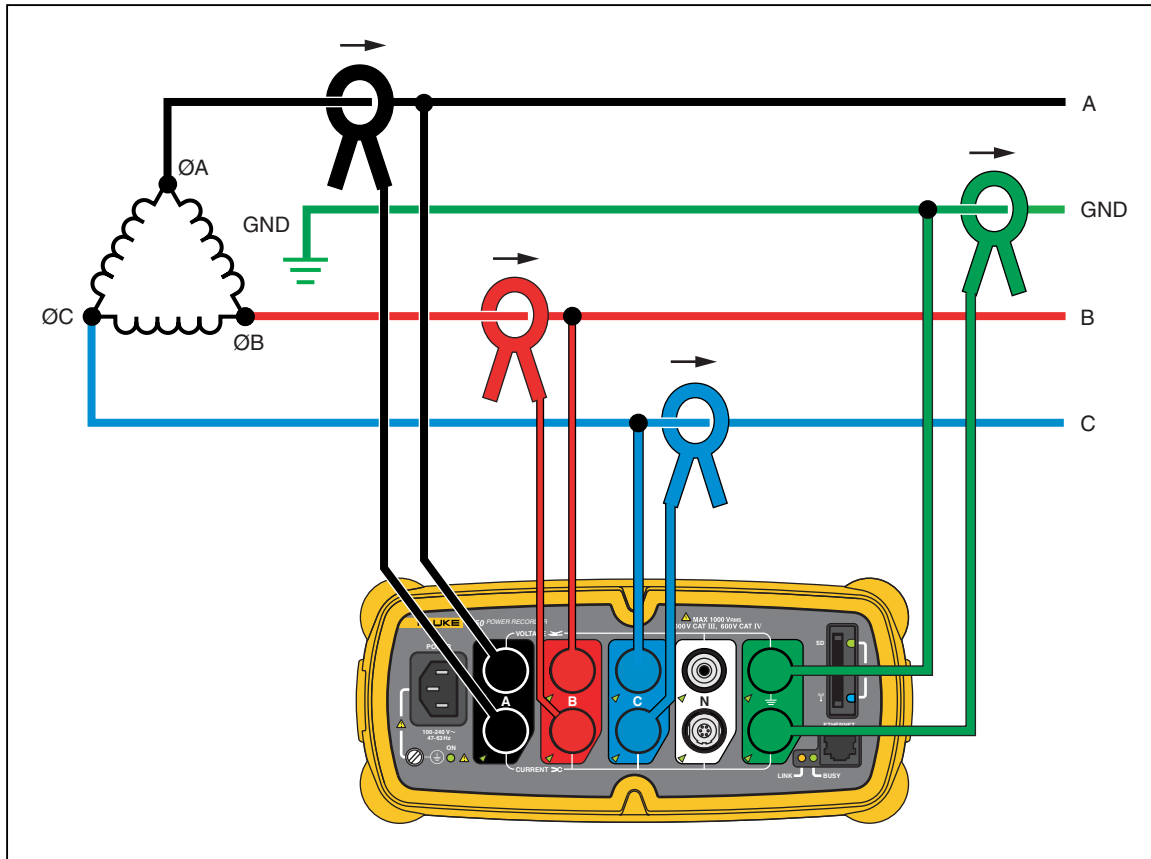
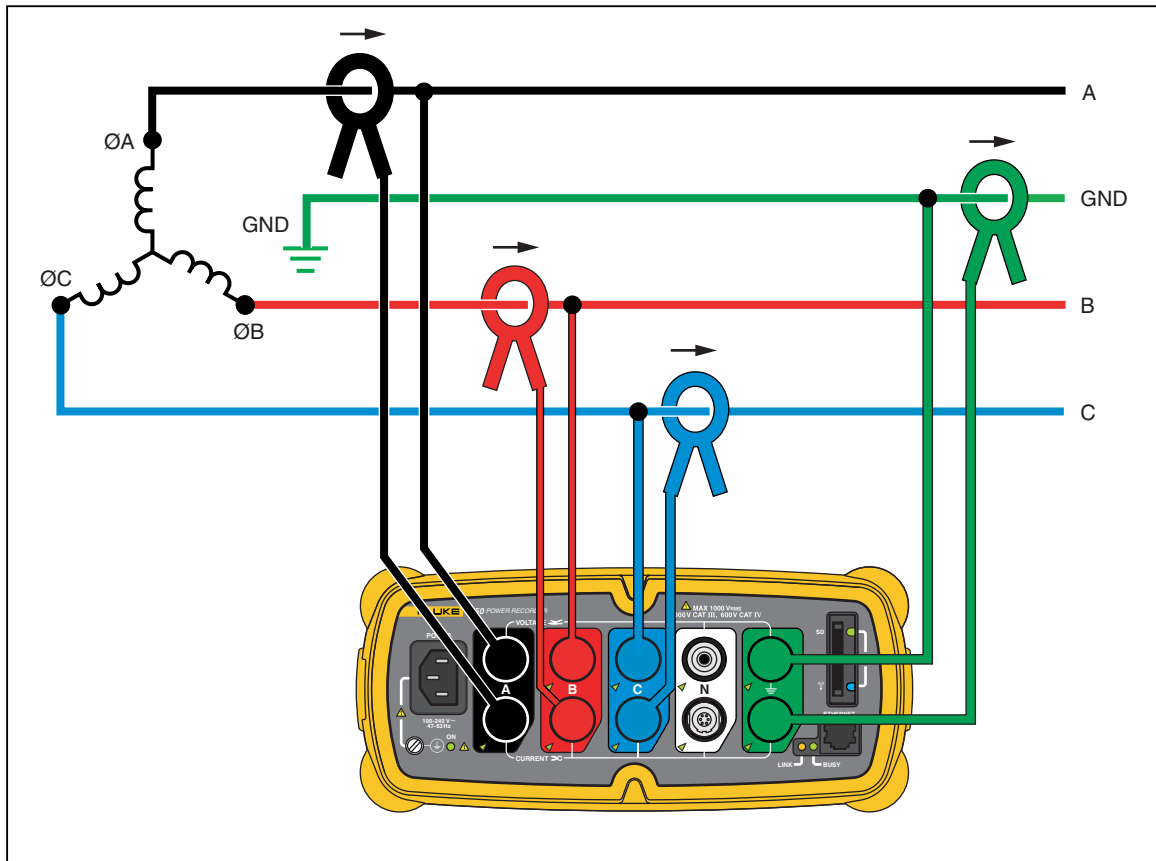


Figure 8. Three-Phase Delta

azd05f.eps

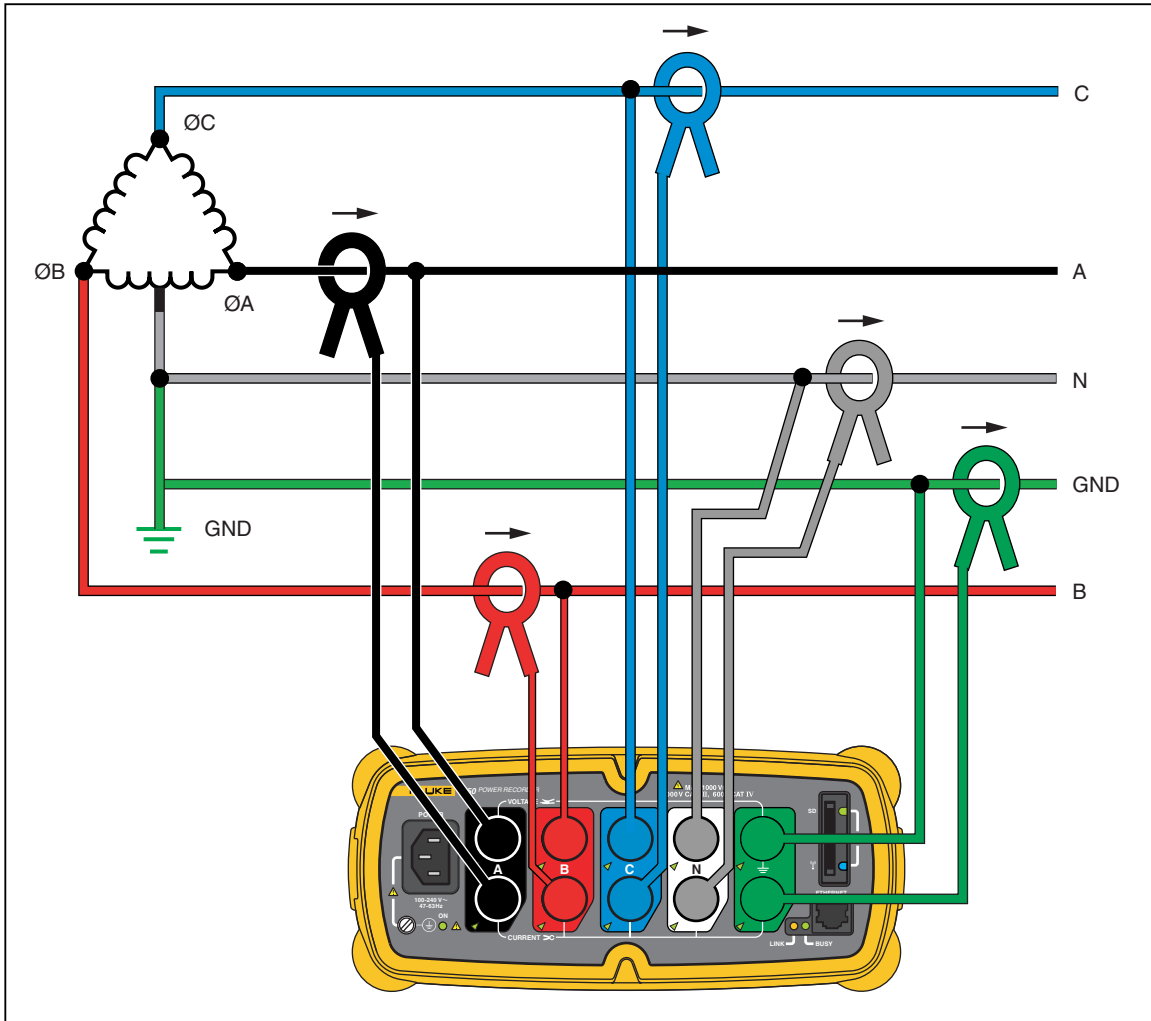
Example: Often found in industrial settings where electric motors are used.



azd12f.eps

Figure 9. Three-Phase IT

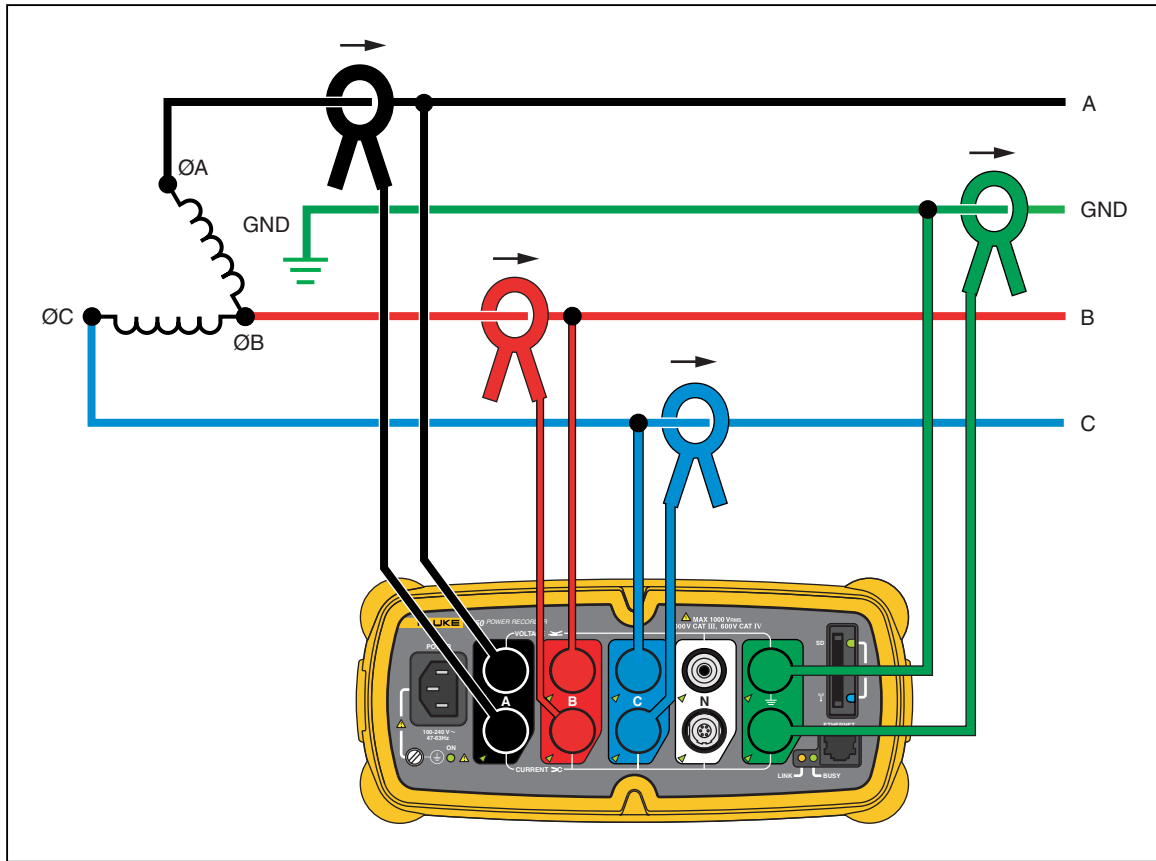
Example: Industrial power in countries that use the IT (Isolated Terra) system, such as Norway.



azd08f.eps

Figure 10. Three-Phase High Leg

Example: A way to get a 120 V single phase feed by tapping across part of a leg in a delta power system



azd18f.eps

Figure 11. Three-Phase Open Leg

Example: A variant of power transformer winding type.

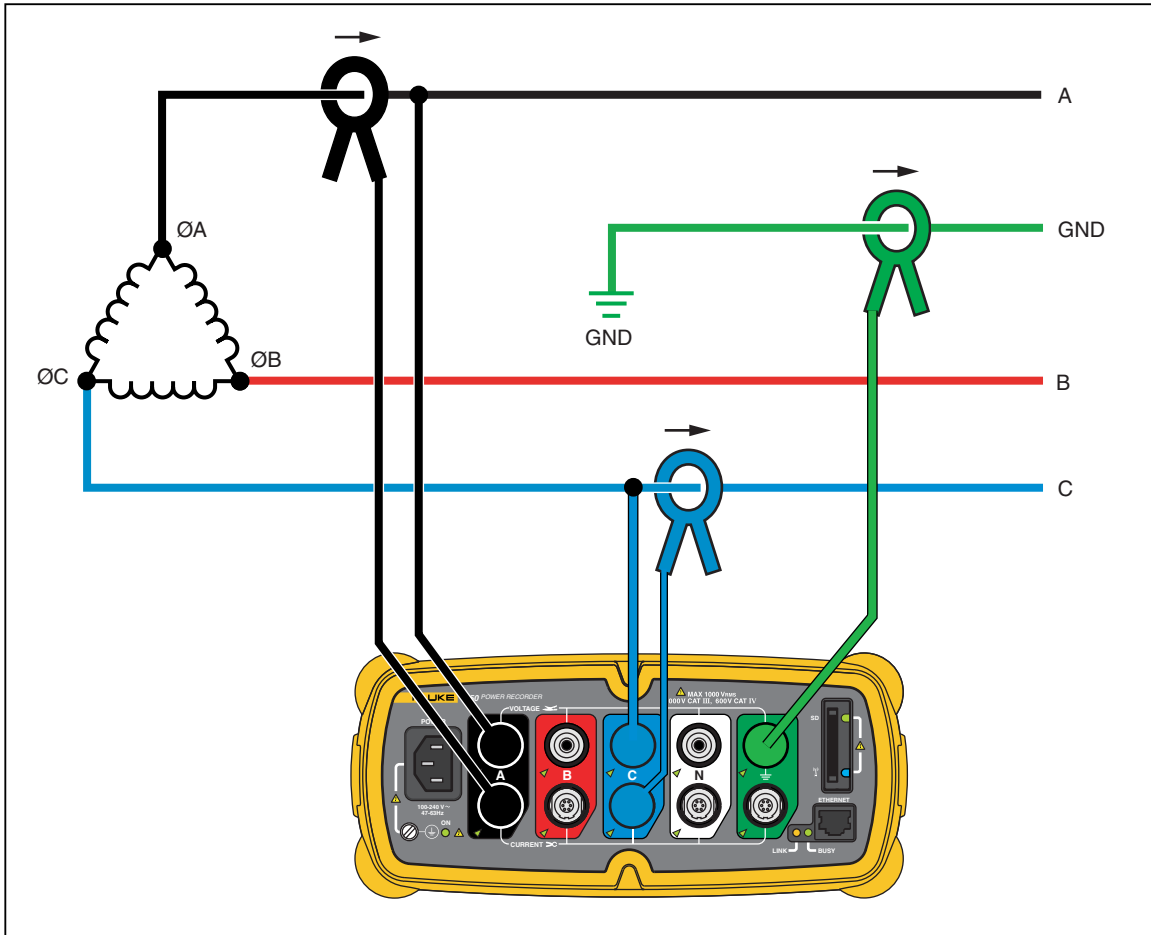
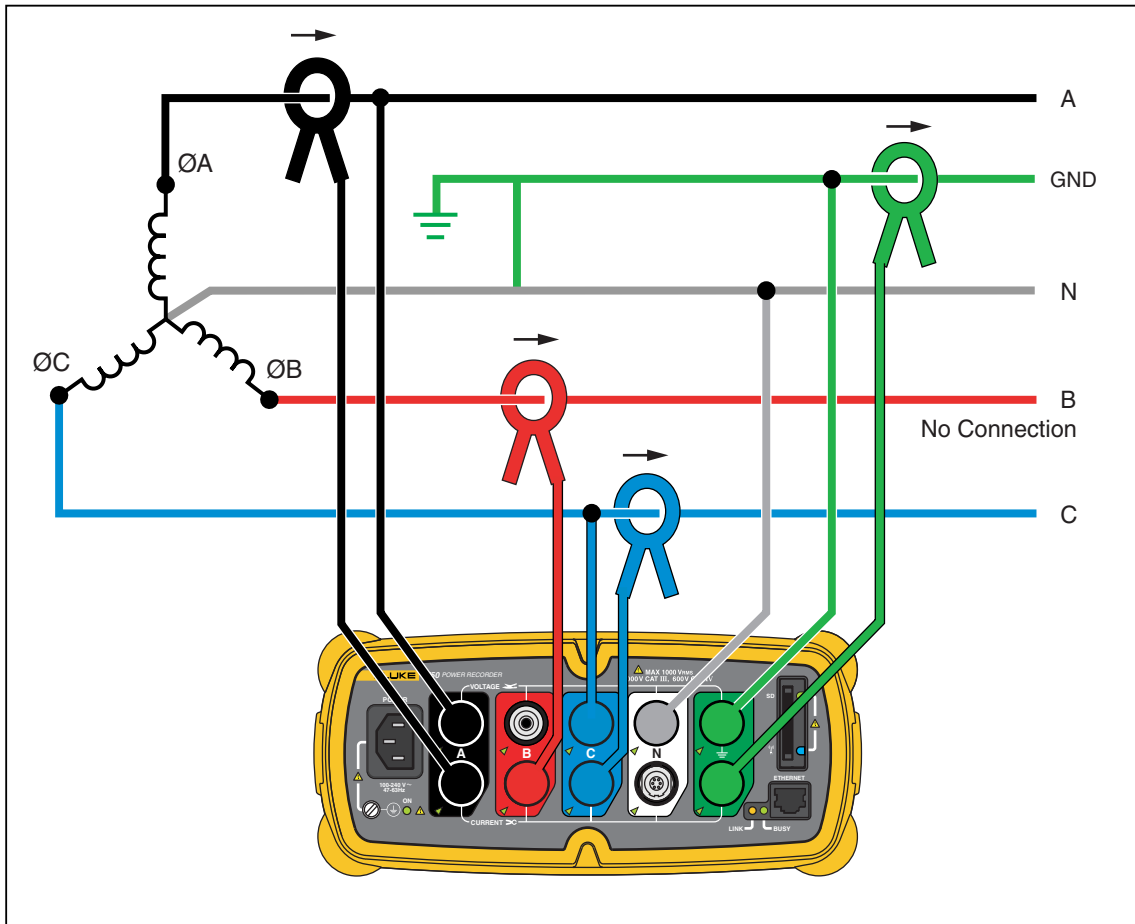


Figure 12. 2-Element Delta

azd13f.eps

Example: Blondel or Aron connection, used to measure power like a two-element revenue power meter.



azd07f.eps

Figure 13. 2 1/2-Element Wye

Example: Blondel or Aron system for a 4-wire (Wye) power secondaries.

Communicating with the Recorder Using Power View

The PDA serves as your control panel for the Recorder. The Power View software installed on the PDA is designed to function as a remote front panel for the Recorder, since the Recorder itself is a “black box” with no integral display or external controls other than status LEDs. With Power View installed on the PDA, you are relieved of the burden of having to carry a laptop and Ethernet cable to a remote site when setting up the Recorder, checking its progress, or finishing a monitoring session.

You can alternatively connect to a Recorder from a PC directly using an Ethernet cable or remotely over an IP network. You can then use Fluke Power Analyze to set up the Recorder, view power measurements wherever the Recorder is installed, or download data from the Recorder.

Power View communicates with the PDA using a wireless controller radio interface. There is no provision for a hardwired PDA interface to the Ethernet port on the Recorder. After data is recorded and downloaded to a PC, you can analyze the recorded data using the Power Analyze software.

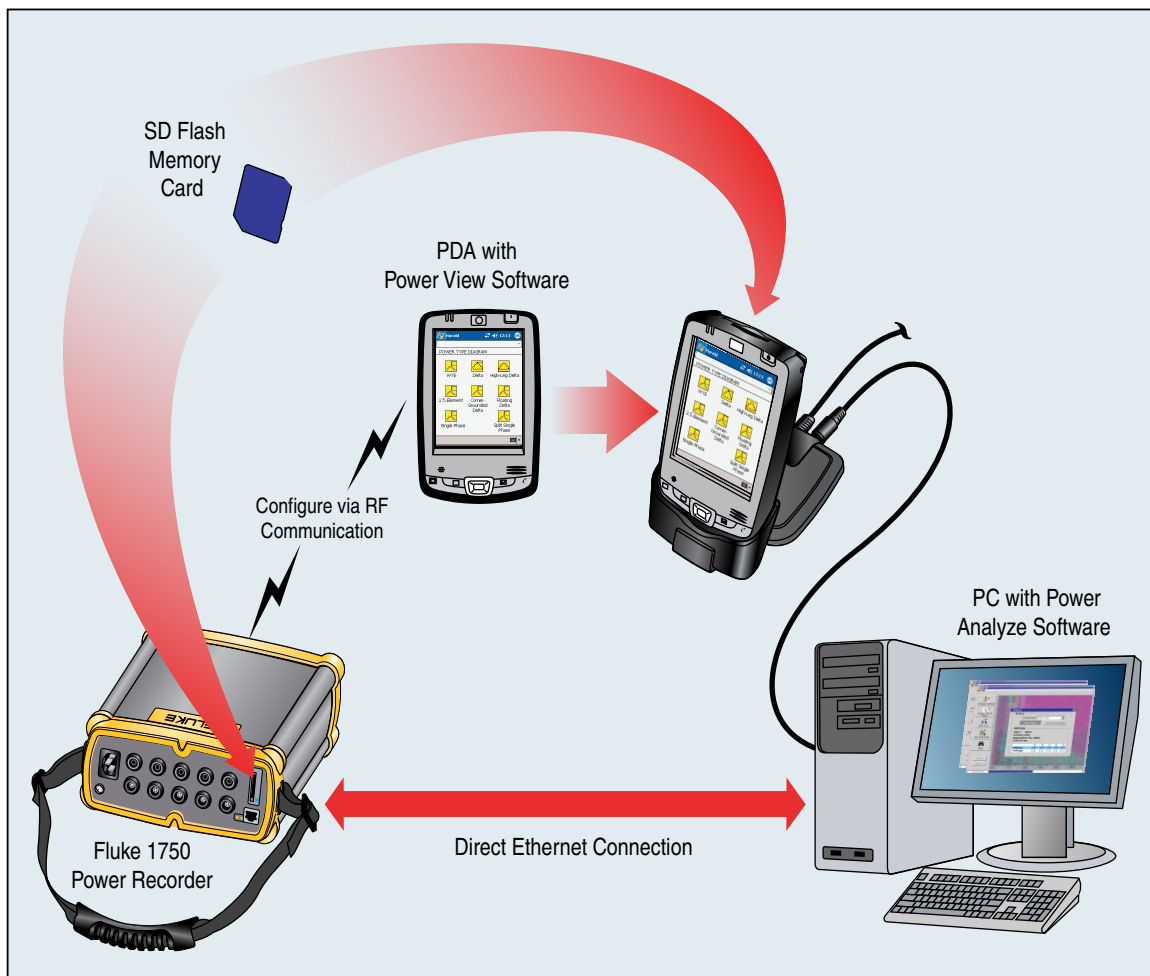


Figure 14. Connecting to the Recorder

azd01f.emf

Navigating in Power View on the PDA

The Menu Bar on the bottom of the Power View screen allows you to quickly and easily configure a Recorder, view live data, and transfer data to the Secure Data (SD) card for viewing and analysis on your desktop computer using the companion Power Analyze software.

Power View Menus

Data

Brings up the memory management screens which are for download to the SD card inserted in the Recorder and for erasing Recorder internal memory and erasing SD card files.

View

Brings up a list of the live detail views: Scope, Meter, Phasor, Harmonics, and Trend. There are configurable detail views of each type of screen available by tapping the sector of interest or the View menu. Once a detail view is selected, navigation to all available detail views is accomplished using the View menu.

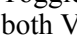
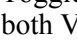
Setup


Brings up the Recorder **Setup** menu, which allows you to configure the Recorder and set recording period information. Using this function, you can tap the appropriate icon to set the following :

- Clock
- Nominal Volts
Nominal voltage and frequency values are auto-detected by the Recorder and shown as the defaults. These settings can be overwritten, forcing the Recorder to change its internal configuration to optimize power quality data recording for custom settings.
- Volts and Current Scale
- Passwords
- Power Type Diagrams
- Phase Swap
- Probe Detect

Icons on the Menu Bar



Toggles between voltage and current waveforms. The PHASOR screen always shows both V & I (volts and amps). This  icon is replaced with the  icon on the detail views, as voltage and current data can be viewed simultaneously.

In all the detail live view screens, a line selection menu is available using the  button at the bottom. This is a checkbox that is used to select the voltage and current channels you want to display.



The Snapshot icon triggers the Recorder to capture high-resolution waveform data and save it in the recorded data stream. This waveform capture is identical to the snapshots taken automatically when you set the “snapshot period” in the Recorder Setup menu.



This icon brings up the Annotate screen. Use the annotate menu to enter text or to insert a file name and load it into the recorded data stream in the Recorder. Annotations can be used to make notes, or to insert a file name of an image or audio file. You can enter multiple start and stop annotations. START and stop annotations are not paired and are not restricted to being used as literally “start” and “stop”. Annotations are often done at the start of a power recording session.

[keyboard]

This icon brings up the standard PDA data entry keyboard.

Menu Tree

The following figure provides an overview of the Power View menu structure that will be helpful in navigating through the Power View application.

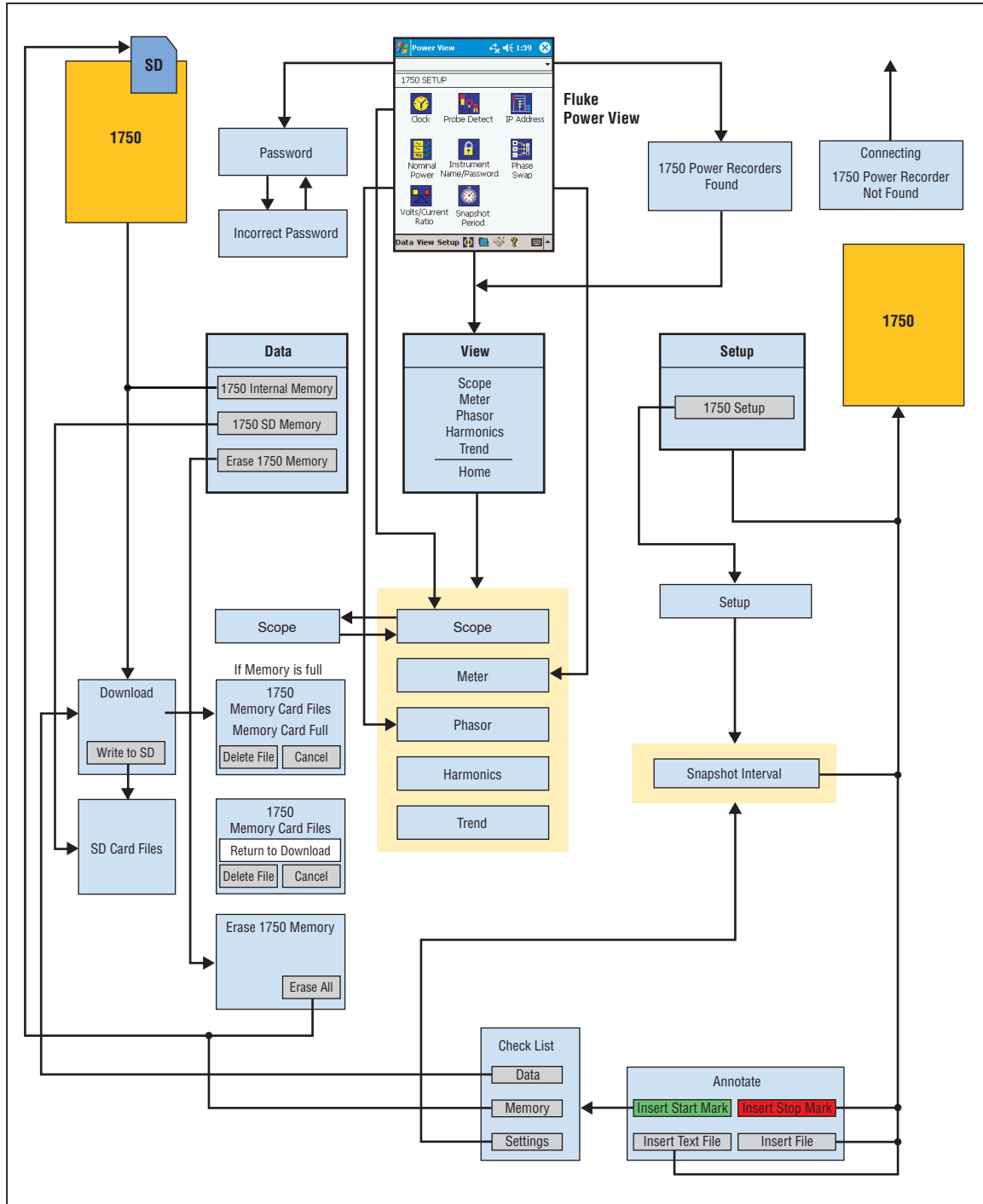


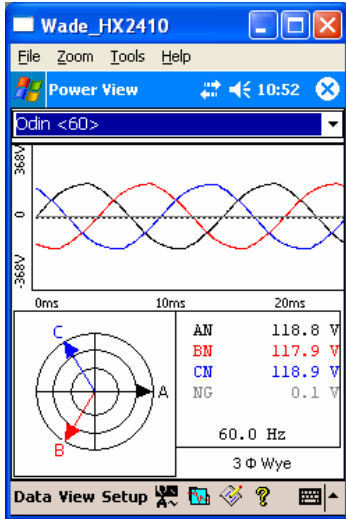
Figure 15. Power View Menu Tree

azd15f.eps

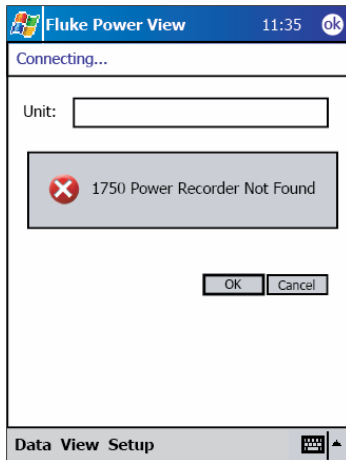
Home Screen

This is the top-level screen, accessed when you start Power View or when you tap View and then Home on the Menu Bar.

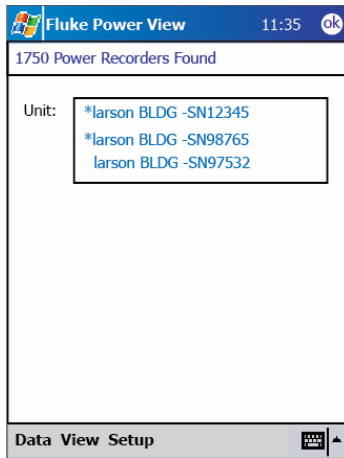
The **Home** screen contains a 1.5 cycle waveform screen, a digital meter screen, and a PHASOR screen. The parameters shown in this screen are not configurable. All phases are shown simultaneously, either all voltage or all current.



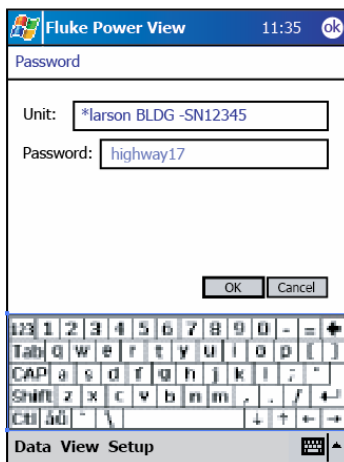
If no Recorders are within range, the following screen appears:



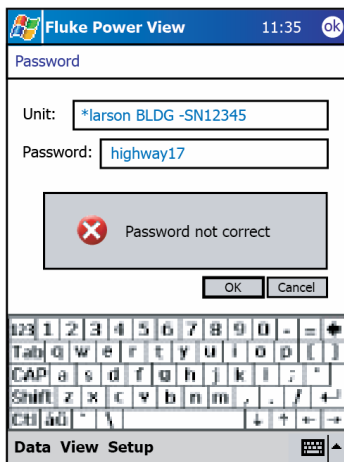
If more than one Recorder is within range, the Recorder selection screen appears. An asterisk preceding the Recorder name means that unit is password protected.



If the selected Recorder is not password protected, the Home screen appears. If password protection is set, the Password screen appears instead.



If you enter an incorrect password, the following message appears:



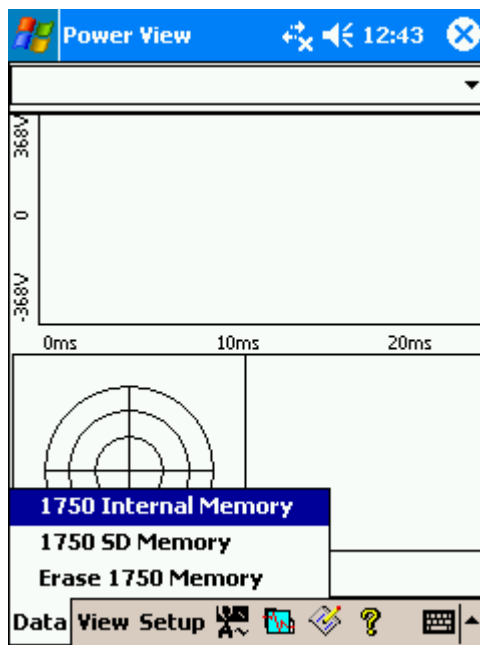
When the password is accepted, the Home screen appears.

Note

A screen to set up password protection for a Recorder is provided in the Setup menu.

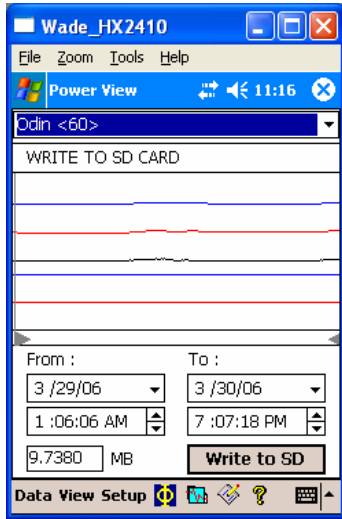
Downloading Data and Erasing Memory

Use the Data menu options to manage the Recorder memory and download recorded data to the SD card plugged into the Recorder's (not the PDA) SD card slot. You are downloading recorded data from the flash memory to an SD card in the Recorder. When you want to use that data, you must move the card to the PDA. You can later copy the data to your PC for review using the Power Analyze software. Tap **1750 Internal Memory** to view the Download screen.

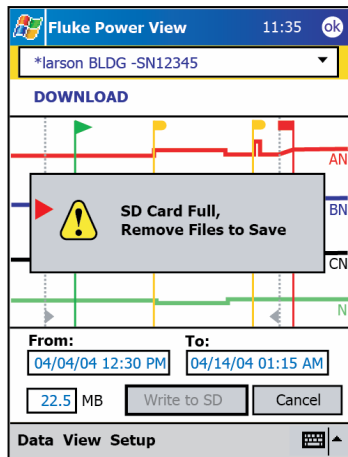


The Download screen shows a three-phase rms V strip chart with date and timescale shown. This represents the data in the Recorder internal memory. The default settings of the start and stop times is everything in memory. To download ALL, tap the **Write to SD** button. If you want to trim off data that contains partial information because probes were being connected, select the START mark annotation (if one was entered by the user) as the start point.

The gray cursor lines right and left with triangular arrowheads at the bottom of the screen show the start and stop times currently selected for download. Green and red flags are START and STOP mark annotations inserted during the recording session. Yellow flags are file name annotations inserted during the recording session, or setup parameter changes that change the data significantly, such as nominal voltage or power type.

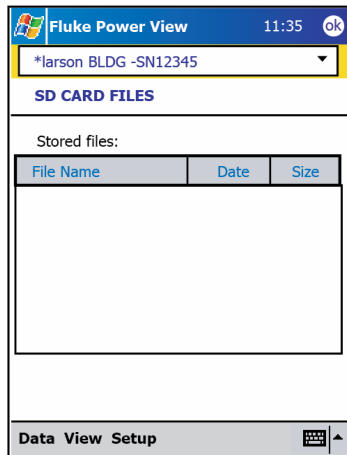


If the SD storage card already contains data files, it may not have room for the new download. Power View alerts you to this condition and asks if you would like to erase the SD card before downloading.

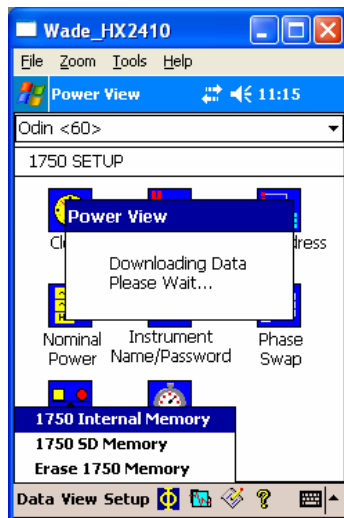


The Memory Card Full message appears for 5 seconds, followed by the screen below. You can also access the download menu by selecting **Data > Recorder SD Memory**.

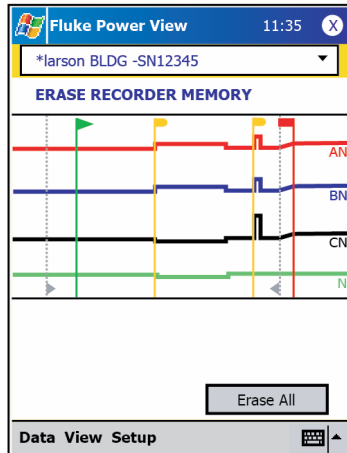
You can delete files as necessary, and when satisfied that there is room on the card, proceed to write the selected internal Recorder memory data to the SD card.



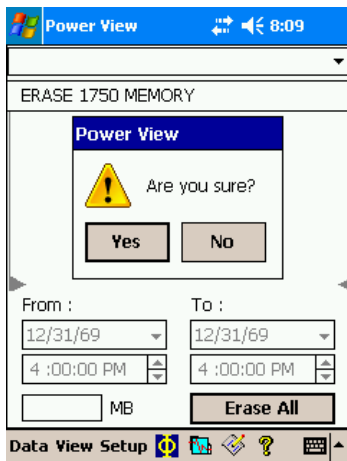
When there is room on the card, a message confirming the download will appear.



You can also tap the **Erase Recorder Memory** from the Data menu option, and tap the Erase All button to erase all power quality data stored in the Recorder. Even then, if you want, you can leave old data in Recorder memory. It will be overwritten automatically when you start your next Recorder session, so it never has an adverse effect on recorded data quality or quantity.



When you choose to **Erase All**, the following popup caution “Are you sure?” appears on the screen.

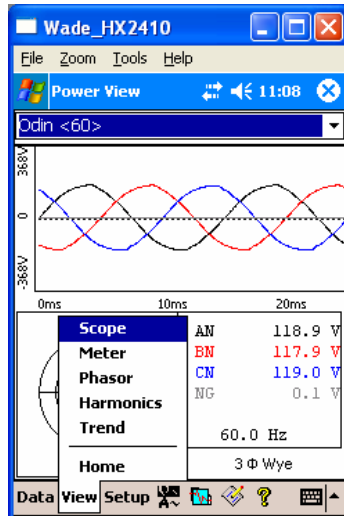


Note

You can also download data by connecting your PC directly to the Recorder with an Ethernet cable and run Power Analyze in the 1750 Live mode. All of the functions (controller, PDA, and Power View) are duplicated in 1750 Live mode.

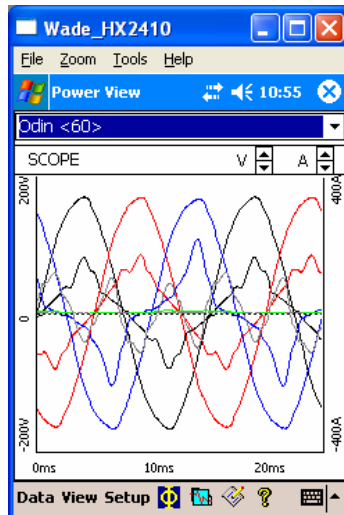
Viewing Live Data

The **View** menu is used to view live data on the circuits on the circuits for example, Scope, Meter, Phasor, or Harmonics.



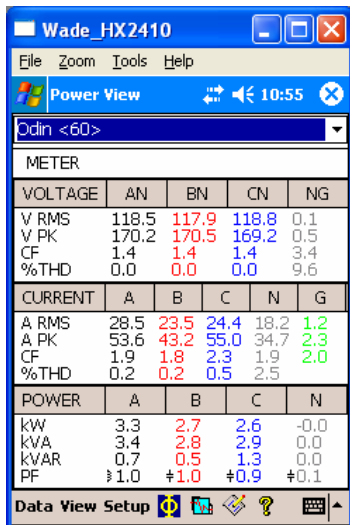
Scope Screen

The **Scope** screen shows 1.5 cycle waveform data for the volts and amp lines selected in the check boxes on Phase View screen. Tap the Phase icon (Φ) to display the Phase View screen.



Meter Screen

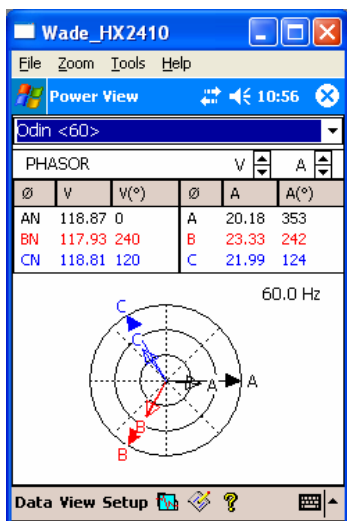
The **Meter** screen shows numeric readings for all selected phases.



Phasor Screen

The **PHASOR** screen shows voltage (long arrows with solid arrowheads), current amplitudes, and phase angles. This screen is used to verify proper test lead and current probe connections. You can use the V and A arrows on the upper right of the screen to change the scaling of voltage and current on the PHASOR diagram.

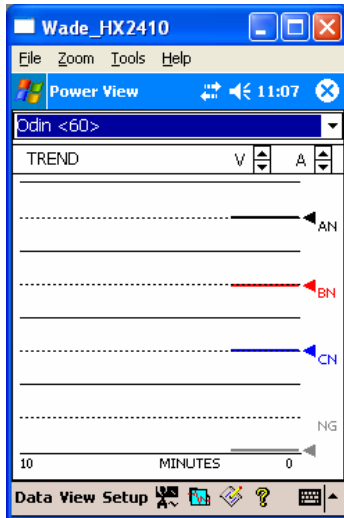
You can easily correct an erroneous Recorder connection by going directly to **Setup>Phase Swap** and using the Recorder to internally invert a CT, swap a voltage or CT phase, or modify a scaling parameter, then return to the screen to verify that the correction has been made. There is no need to touch the cables. See “Phase Swap” later in the manual for additional information.



Trend Screen

The **Trend** screen shows live data being recorded as a strip chart display of the selected phases of voltage or current. This moment in time is visible on the right side of the graph.

The traces fill the screen in 10 minutes, and continue FIFO (first-in, first-out). This feature is intended to paint a picture of the short-term stability of the power system. The V and A scaling arrows on the upper right work like the scaling arrows on the PHASOR screen.

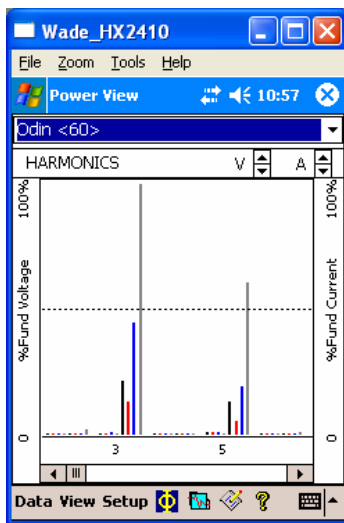


Harmonics Screen

The **Harmonics** screen shows the magnitudes of the selected phases of V and I. The scale is % of nominal.

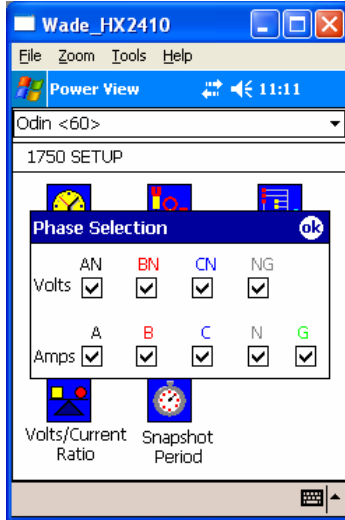
The slider control displays harmonics of a higher order up to the 50th. The V and A scaling arrows are on the screen in the upper right.

If the power type is delta, V phases are AB, BC, and CA (L1L2, L2L3, L3L1 is available as a localized European labeling scheme). If the power type is Wye, V phases are AN, BN, CN, and NG. (N = neutral, G = ground).



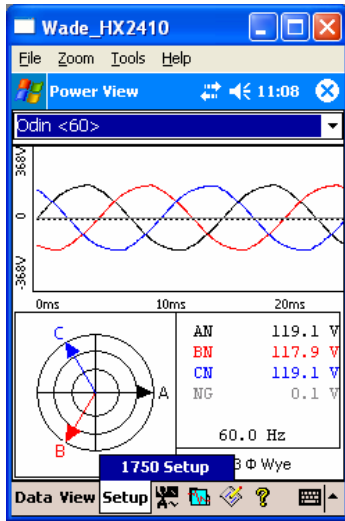
Viewing Phases

In all the detail Live View screen, a line selection menu is available using the Φ button at the bottom. The Phase Selection screen reveals check boxes for selecting the voltage and current channels you want to display.



Setting Up the Recorder

To adjust the settings of the Recorder, tap **Setup > 1750 Setup**.



The Setup screen shows set up options, with icons for available actions.

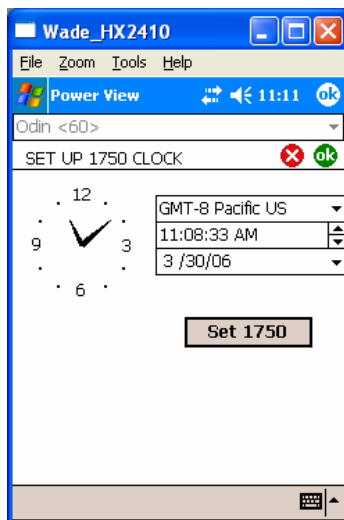


From the Setup screen, you can adjust either the recording period information or the Recorder settings. Tap an icon on the Setup screen to view or configure:

- Clock
- Probe Detect
- IP Address
- Nominal Power
- Instrument Name/Password
- Phase Swap
- Volts/Current Ratio
- Snapshot Period

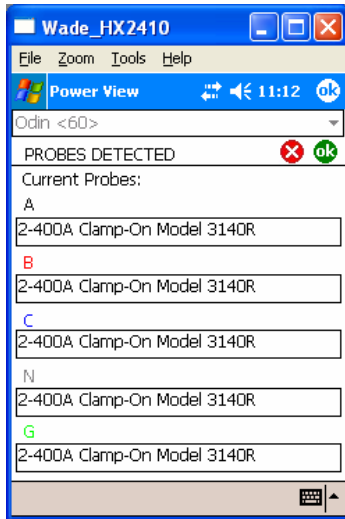
Setting the Clock

Use this feature to set the PDA clock or clock to synchronize the Recorder with the PDA clock.



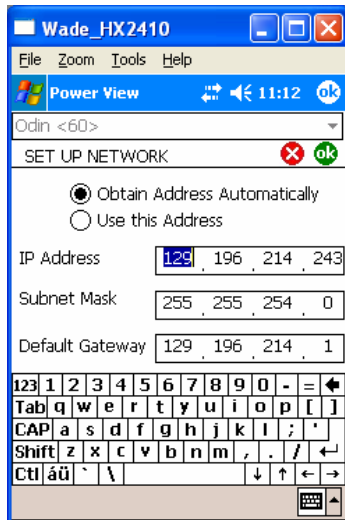
Probe Detect

This screen shows the types of probes attached to the Recorder current inputs. Current probes are automatically detected.



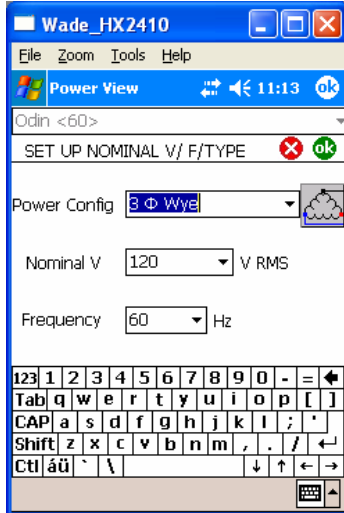
Setting the IP Address

Select **Automatically Obtain Address** unless your company's IT department has specific requirements that require assigned IP addresses.



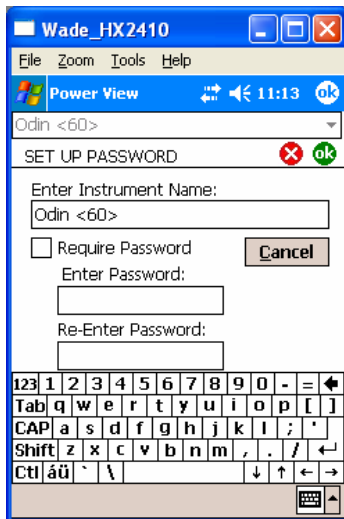
Overwriting Nominal Power Values

Nominal power values are auto-detected by the Recorder and shown as the defaults. You can overwrite these settings by change the Recorder's internal configuration to optimize power quality data recording custom settings.



Assign Recorder Name and Password

Use this feature to assign a name identifier to the Recorder and to establish a password for the Recorder. This naming feature is designed to help you keep track of which Recorder is in use. The Recorder name is later associated with the data file that you download from the Recorder.



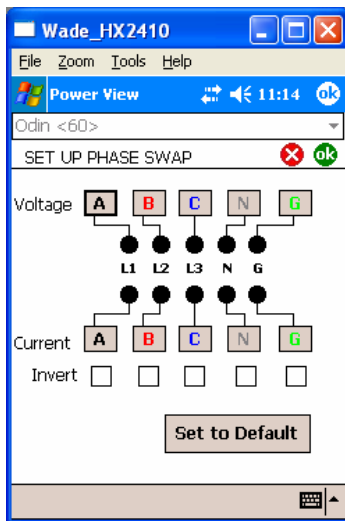
Using Phase Swap

Rather than having to change the physical connections to the power system, use the Phase Swap feature to make a software-selectable correction without physically switching the cable. You can select from the following:

- Swap any voltage input
- Swap any current input
- Invert any current input clamp

The screen shows check boxes to invert any current probe. Current probes are directional, and selecting “invert” has the effect of removing the probe and turning it around.

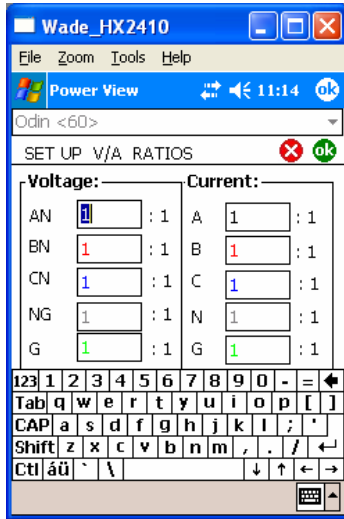
If the power type is delta, V phases are AB, BC, and CA (L1L2, L2L3, L3L1 is available as an optional setting). If the power type is Wye, V phases are AN, BN, CN, and NG. (N = neutral, G = ground).



Setting the Volts and Current Ratio

Use this menu to add a ratio factor to the voltage or current input on each phase. Changing the first “1” in each case if there is a potential transformer in series with the voltage connection such as when you want to monitor a medium-voltage network using PTs and CTs to scale the voltage and current to a convenient level for measuring instruments.

The current ratio applies a ratio to the current input in order to show the current present on a medium-voltage network. This feature is intended to be used for sensing low levels of current to represent the much higher levels on the primary side at a substation or step-down transformer that has built-in metering current transformers.




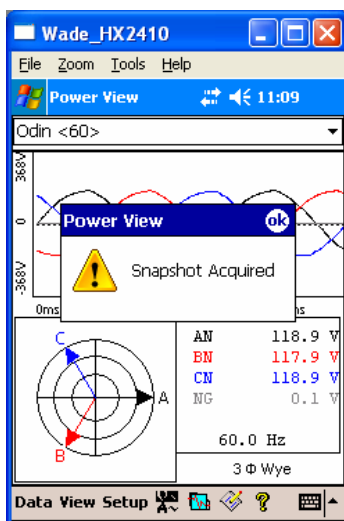
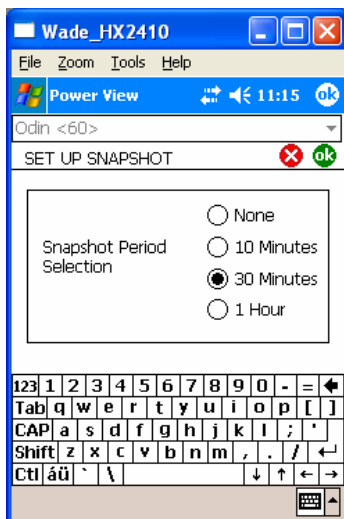
Setting the Snapshot Period - Periodic Waveform Capture Setting

Use the Snapshot Period screen to program the Recorder to take automatic power conditions readings which are then stored in the recorded data stream. These snapshots contain a phasor diagram, waveforms of current and voltage, harmonics profiles, and other data.

- None
- 10 minutes
- 30 minutes
- 1 hour

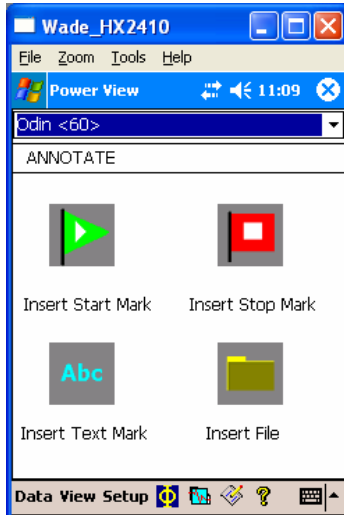
Note

You can take a snapshot manually at any time at any time while connected over the wireless link to a Recorder. Press the Waveform icon  on any of the View screens to take a snapshot. The message, “Snapshot Acquired” confirms that a snapshot was taken.



Working with Annotations

Annotations are optional markers that can be inserted by the Recorder operator to flag a particular point in the data when recording. They are usually inserted on using Power View with the wireless PDA.



There are five types of annotations:

- START annotation (green)

The START annotation can be used to signify where important data begins. For example, the operator might want to establish a start annotation after having finished all probe connections and instrument setup, to indicate that any preceding data was preliminary.

Note

You are not limited to using the START and STOP annotations in pairs, or to show a range of data. You can use each as many times as desired to mark a particular point during recording.

- STOP annotation (red)

The STOP annotation can be used to signify where important data ends.

- File annotation (yellow)

File annotations contain the name of a picture or audio file relevant to the data. See “Using Image or Voice Annotations” later in this manual.

- Text annotation

Text annotations contain a text note.

- Power Configuration Change annotation

Power Configuration Change annotations are inserted by the system when a change is made to the Power Configuration in the Recorder. These markers only display in the Download dialog box.

To show or hide annotation markers:

- In the Volts/Amps/Hz or Events view, check or uncheck the Annotations option on the view controls.

To open an annotation:

- In the Volts/Amps/Hz view, Events view, or Download dialog box, click on the annotation.

If the annotation is associated with an audio (.WAV) or image (.jpg) file, the application associated with that file will start and open the file. If the file is not in the default directory *My Documents\Fluke\PQ Analyze*, a dialog box opens so that you can navigate to the file.

Note

If clicking on an annotation marker does not seem to do anything, the Zoom box is probably selected in the graph toolbar, instead of the Select tool. Click the Select tool and then select the annotation.

To see overlapping annotations:

Sometimes annotations are so close to each other that they actually overlap on the Volts/Amps/Hz reference graph. When this is the case, if you click on overlapping annotations, a menu opens and you can select either Open, to open the annotation now on top, or Select Next Overlapping Annotation, to bring the next one to the top.

- To open the annotation now on top, choose Open.
- To bring the next annotation to the top, choose Select Next Overlapping Annotation. To then open that annotation, click on it again and choose Open.

Note

To see overlapping annotations more clearly on the Volts/Amps/Hz reference graph, move the selection cursors so that they just surround the area that contains the overlapping illustrations. The Detail graph adjusts as the cursors move, zooming in to show the area between the selection cursors. You can now see the annotations separately.

Using Image or Voice Annotations

While you are monitoring data with a Recorder, you may find it helpful to take a picture that relates to the power quality data you are recording, or to record verbal comments as you observe the conditions or review the data being measured. You can then associate the image or recording with the data being recorded by adding annotations that reference them.

The PDA includes a microphone for recording notes which are saved as .WAV files, and an optional camera accessory is available on the PDA which will capture images as .jpg files.

You can associate both images and audio files with the data being gathered in the Recorder by inserting annotations and specifying the name of a .WAV or .jpg file. After you download data from the Recorder, you can then move the image and audio files to the PC along with the recorded data (.odn) file.

Note

You can also associate other types of files with the annotation. For example, if you had a .MPJ file with a movie, or a .DOC file with associated information. You can enter any file name using this annotation method.

Inserting Image or Voice Annotations

1. Set up the Recorder and begin monitoring.
2. Using your PDA-cam or another camera, take a picture of what you want to capture.
3. Click the Annotate icon to display the Annotate screen.
4. Move the image or audio file to a location that will make it easier to Transfer it to a PC later, when you download and move the recorded data file to your PC. Place the file into the synchronization folder on your PDA, so that it will be automatically transferred into the sync folder on the PC the next time you dock the PDA.

Cleaning and Maintenance

- The Recorder contains no user serviceable parts. Contact an Authorized Fluke Service Center for repair.
- Periodically wipe the case with a damp cloth and mild detergent. Do not use abrasives or solvents.

Regulatory Information for Wireless Communication

⚠Caution

Any changes or modifications to the wireless 2.4GHz radio not expressly approved by Fluke Corporation could void the user's authority to operate the equipment.

FCC ID: T68FLK1750

IC: 6627A-FLK1750

This device complies with Part 15 of the FCC Rules. Operation is subject to the following two conditions: (1) this device may not cause interference, and (2) this device must accept any interference, including interference that may cause undesired operation of the device.

Class A digital device: A digital device that is marketed for use in a commercial, industrial or business environment, exclusive of a device which is marketed for use by the general public or is intended to be used in the home.

Class B digital device: A digital device that is marketed for use in a residential environment notwithstanding use in commercial, business and industrial environments. Examples of such devices include, but are not limited to, personal computers, calculators, and similar electronic devices that are marketed for use by the general public.

The Fluke 1750 Power Recorder (wireless host) has been tested and found to comply with the limits for a Class A digital device, pursuant to Part 15 of the FCC Rules. These limits are designed to provide reasonable protection against harmful interference when the equipment is operated in a commercial environment. This equipment generates, uses, and can radiate radio frequency energy and, if not installed and used in accordance with the instruction manual, may cause harmful interference to radio communications. Operation of this equipment in a residential area is likely to cause harmful interference in which case the user will be required to correct the interference at his own expense.

In addition, the internal limited modular radio has been tested and found to comply with the limits for a Class B digital device, pursuant to Part 15 of the FCC Rules. These limits are designed to provide reasonable protection against harmful interference in a residential installation. This equipment generates, uses and can radiate radio frequency energy and,

if not installed and used in accordance with the instructions, may cause harmful interference to radio communications. However, there is no guarantee that interference will not occur in a particular installation. If this equipment does cause harmful interference to radio or television reception, which can be determined by turning the equipment off and on, the user is encouraged to try to correct the interference by one or more of the following measures:

- Reorient or relocate the receiving antenna.
- Increase the separation between the equipment and receiver.
- Connect the equipment into an outlet on a circuit different from that to which the receiver is connected.
- Consult the dealer or an experienced radio/TV technician for help.

The term “IC:” before the radio certification number only signifies that Industry of Canada technical specifications were met.

Specifications for the System: Recorder and Power Analyze Software

General Specifications

Power Quality Measurement Standards

Conformance	IEC 61999-1-4 Class 1, IEC 61000-4-30 Class A or B depending on measurement function, IEEE519, IEEE1159, IEEE1459
Clock/Calendar	Leap years, 24-hour clock
Real-time Clock Accuracy	Not more than ± 1 s/day
Internal Memory Capacity for Data	At least 1 GB
Maximum Recording Period	At least 31 days
Measurement Time Control	Automatic
Maximum Number of Events	Limited only by the size of the internal memory.
Power Requirements	100 to 240 V rms $\pm 10\%$, 47-63 Hz, 40 W
Operating Time During Interruptions	
(Internal UPS operation).....	5 minutes per interruption, 60 minutes total operating time without recharging
Dimensions	215 x 310 x 35 mm (8.5 x 12.2 x 3.5 inch)
Mass (Weight)	6.3 kg (14 lbs)

Input Specifications

Measurement Types	One Phase Plus Neutral, One Phase IT No Neutral, One Phase Split Phase, Three Phase Wye, Three Phase Delta, Three Phase IT, Three Phase High Leg, Three Phase Open Leg, 2 Element Delta, 2 ½ Element Wye
Input Channels	Voltage: 5 channels, AC/DC Current: 5 channels
Voltage Channels	Input resistance: 2 M Ω Input capacitance: < 20 pF
Current Channels	1 M Ω . Self-identifying probes Types available: current probes, Flexi-CTs
Measuring Method	Simultaneous digital sampling of voltage and current. Digital PLL synchronized sampling, internal frequency reference used during voltage drops.

Synchronization and Sampling

PLL-Synchronization Source	The PLL synchronizes to the A-N voltage for wye power types, and to the A-B voltage for delta power types. All listed power types can be characterized as either wye or delta.
PLL Lock Range	42.5 to 69 Hz

Sampling Frequency	Voltage and current: 256 samples/cycle Inter-harmonics per IEC61000-4-7: 2560 points / 10 cycles (50 Hz), 3072 points/12 cycles (60 Hz) Transient Voltage: 5 MHz
A/D Resolution	Voltage and current: 24 bits Transient voltage: 14 bits

Voltage and Current Measurements

Voltage Measurement Range	AC voltage: 1000 V rms \pm 10% Overrange DC voltage: \pm 1000 V + 10% Overrange
Voltage Crest Factor	3 or less
Voltage Input Impedance	2 M Ω
Current Measurement Range	Depends on current probe used
Current Crest Factor	4 or less
Current Input Characteristics	2 V rms = full scale, 1 M Ω Input Impedance for ferro CTs, low impedance for Flexi-CTs

Voltage and Current Measurement Accuracy

RMS Voltage

Measurement Type	True rms calculated continuously: every cycle, every 1/2 cycle, and every 10 or 12 cycles at 50 or 60 Hz respectively, as required by IEC 61000-4-30.
Measurement Uncertainty	AC: \pm 0.2 % reading \pm 0.1 % full scale above 50 V rms DC: \pm 0.5 % reading \pm 0.2 % full scale above 50 V dc

RMS Current

Measurement Type	True rms calculated continuously: every cycle, every 1/2 cycle, and every 10 or 12 cycles at 50 or 60 Hz respectively, as required by standards
Measurement Uncertainty	\pm (0.1 % full scale + 5 % reading + current sensor accuracy, valid for 5 % to 100 % of current sensor range)
Current Accuracy	Ferromagnetic Clamps \pm (0.1 % full scale + 2 % reading + current sensor accuracy), valid for 5 % to 100 % of current sensor range Flexible Current Probes \pm (0.1 % full scale + 5 % reading + current sensor accuracy), valid for 5 % to 100 % of current sensor range

Transient Voltage (Impulse)

Measurement Type	Waveshape sampling, not peak detect
Full Scale	8000 V pk
Sample Resolution	200 nS
Measurement Uncertainty	\pm 5 % reading \pm 20 V (test parameters: 1000 V dc, 1000 V rms, 100 kHz)

Dip (Sag) and Swell Measurements

Voltage Swell (rms swell)

Measurement Type	True rms (one cycle calculation by overlapping each half cycle) (voltage between lines is measured for 3P3W lines and phase voltage is measured for 3P4W lines)
Displayed Data	Amplitude and duration of swell
Measurement Accuracy	Same as rms voltage
Voltage Dip (RMS sag)	
Measurement Type	True rms (one cycle calculation by overlapping each half cycle) (voltage between lines is measured for 3P3W lines and phase voltage is measured for 3P4W lines)
Displayed Data	Amplitude and duration of dip or interruption
Measurement Accuracy	Same as rms voltage
Voltage Dropout (Interruption)	
Measurement Type	Same as Voltage Dip

Power and PF Measurement

Calculated per IEEE1459 for best performance when distortions exist

Measurement Type True rms calculated continuously: every cycle, and every 10 or 12 cycles at 50 or 60 Hz respectively, as required by standards

Measurement Accuracy $\pm 0.2\%$ reading $\pm 0.1\%$ full scale + current sensor accuracy

Frequency

Measurement Range 42.5 to 69 Hz

Measurement Source Same as PLL synchronization source

Measurement Accuracy ± 10 mHz (10 to 110% of range, with sine wave)

Reactive Power

Accuracy $\pm 0.2\%$ reading $\pm 0.1\%$ full scale + current sensor accuracy

Power Factor

Measurement Range -1.000 (leading) to 0.000 to +1.000 (lagging)

Measurement Accuracy ± 1 digit from the calculation of each measured value (± 3 digits for total)

Displacement Power Factor

Measurement Method Calculated from the phase difference between voltage fundamental and current fundamental

Measurement Range - 1.000 (leading) to 0.000 to + 1.000 (lagging)

Measurement Accuracy $\pm 0.5\%$ reading $\pm 2\%$ full scale ± 1 digit

Voltage Unbalance and Phase Sequence

Measurement Method Positive sequence voltage divided by negative sequence voltage, per IEC 61000-4-30

Harmonic Voltage and Current

Analysis Window rectangular

Analysis Order 1st to 50th order

Measurement Accuracy Voltage / Current: 1st to 20th orders: $\pm 0.5\%$ reading $\pm 0.2\%$ full scale
21st to 50th orders: $\pm 1\%$ reading $\pm 0.3\%$ full scale
(current sensor accuracy must be included for current and power)

Measurement Method IEC 61000-4-7

Inter-harmonic Voltage and Current (Intermediate Harmonics)

Analysis Window rectangular

Analysis Orders 0.5 to 49.5th order

Measurement Method IEC 61000-4-7

External Interface Specifications

LAN Interface

Connector RJ-45

Speed and Type 10/100 Base-T, auto MDIX

Communications Protocol TCP/IP over Ethernet

Wireless Controller Interface

Connection wireless (2.4 GHz radio)

Speed up to 700 kbit/second

Communications Protocol Bluetooth SPP

Environmental and Safety Specifications

Operating Environment indoors or in covered area outdoors, up to 2000 m altitude

Storage Temperature and Humidity -20 °C to 50 °C, 80 % rh max, non-condensing

Operating Temperature and Humidity 0 °C to 40 °C, 80 % rh max, non-condensing

Maximum Rated Working Voltage

Voltage Terminals 1100 V rms

Voltage Durability 5550 V rms ac for 1 minute, between voltage input terminals, voltage input terminals and current probes, and voltage input terminals and case (50/60 Hz, 1 mA sense current)

Enclosure Protection IP30 (per EN 60529)

Standards Conformance

EMC	EN 61326-1:1997+A1:1998 Class A EN 61000-3-2:1995+A1:1998+A2:1998 EN 61000-3-3:1995
Safety	EN 61010-1:1993+A2:1995 Voltage input unit: Contamination Level 2 Overvoltage Category 1000 V CAT III, 600 V CAT IV (anticipated overvoltage: 8000 V)

